

singltrek

RST EUROPEAN TEST CENTRE
SINGLTREK POD SMRKEM



RST GLOBAL NETWORK

Head quarter
Dah len Ind. Co., Ltd.
Tel: +886-2-85212361
Fax: +886-2-85219159
Email: rd@rst.com.tw
[Http://www.rst.com.tw](http://www.rst.com.tw)

USA
RST USA Service & Distributor
Tel: +1-(861)-380-8948
Email: sales@rstusaoperator.com

Europe
RST Europe Office
Tel: +49-711-2588221
Fax: +49-711-2588402
Email: info@rst-europe.eu

China
Suzhou Dewei Precision Co.Ltd
Tel: +86-512-86180698
Fax: +86-512-86160100
Email: services@rst-topway.cn

Photo : Jan Mocnak

RST PRODUCT SPEC 2015

Since 1972, RST has been bringing you the finest experience in suspension technology.

RST



PRODUCT SPEC 2015

DH/FR/AM
XC/ATB
DIRT JUMP
TREKKING/CROSS
E-BIKE

Contents

Content 01

Evolution 03

Symbol	05
Product overview	06
Color options	07
Number weight	08

DH / FR / AM 07

KILLAH	09
STICH	10
KOQUE	11
TITANIS / TITAN	12

XC / ATB 13

CHAMP 29-15	15
CHAMP 29	16
CHAMP 27.5-15	17
CHAMP 27.5	18
CHAMP 26	19
FIRST 29-15	20
FIRST 29	21
FIRST 27.5-15	22
FIRST 27.5	23
FIRST Platinum	24
FIRST 26 / 24	25
AERIAL 29	26
AERIAL 27.5	27
AERIAL 26 / 24	28
OMEGA 29 / 26	29
OMEGA 27.5	30
BLAZE 29 / 26	31
BLAZE 27.5	32
GILA 27.5	33
GILA 26 / CAPA	34

DIRT JUMP 35

SPACE / DIRT 36

CROSS TREKKING 37

VOGUE	39
VIVAIR	40
VITA	41
NEON / SOFI	42
NOVA / VERSE	43
URBAN / PLS Info.	44

SINGLE SHOCK-M series

SS-M7 / SS-M6	45
SINGLE SHOCK-A series	46
SS-A7 / SS-A6	46
SINGLE SHOCK-A series	47
SS-A4 / SS-A2	47
RIGID FORKS	48
RF-M7 / RF-M6	48
ELEMENT	49

SPEEDY E-BIKE 49

PULSE Air 29	50
PULSE Air 27.5 / 26	51
PULSE Coil 29	52
PULSE Coil 27.5 / 26	53
DIMENSION	54

ROAD RACE 55

vla	56
-----	----

Specification 61

GLOBAL OVERVIEW 73

EVOLUTION

15mm QR Through Axle Upgrade

- Based on the current RST through axle design
- Weight reduce 24% compare to current 15mm QR axle
- Improved stiffness and durable design
- Developed for aggressive off-road use
- Tool-free handling



27.5 Advantages

- Lower rolling resistance
- Better traction than a 26" bike
- Smaller geometry limitations (a lot less than a 29er)
- Still a low center of Gravity (better than a 29er)
- Small Suspension travel limitations (a lot less than a 29er)
- Improved toe clearance compared to a 29er



Lightweight Cartridge Design – “OCR-C”



OCR-Cartridge is RST's newest lightweight damping system design, based on the well-proven open bath system "OCR" Advantages of OCR-C:

1. Drastic weight loss compared to OCR
2. Easy maintenance due to the cartridge design
3. No sacrifice regarding the high OCR performance level

New Remote Lockout Shifter - RL



- Complete new compact design
- 20% smaller than current RL
- Weight reduced 20g compare to current RL
- Easy to use with lock and unlock function
- Works with all hydraulic lockout RST forks

Air Cartridge Design

- New air cartridge system
- No Air fork purchase needed
- Upgrade selected coil spring forks to an air spring suspension

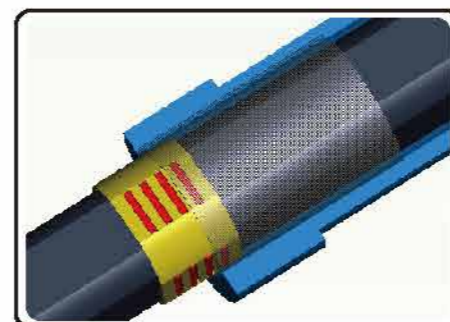
OE model: AERIAL 29, 27.5, 26, 24
After market: Air cartridge upgrade kit available for OMEGA 29, 27.5, 26& BLAZE 27.5, 26



Single Shock 2ND GENERATION = Comfortable SMOOTH PERFORMANCE

An elegant appearance will always be one topic for a commuting bicycle. The RST Single Shock combines the elegant appearance with a highly developed suspension system. The 2nd generation Single Shock is using an advanced Needle Bearing system that provides:

- Riding Comfort
- Smooth Performance
- Long Time Wearing Resistance
- Excellent compatibility with most of the frames on the market



Hydro Forming Project

- Fork blade produced in one piece
- Advanced Hydro Forming process
- Material: Aluminum 6061 Series

Available for:
700C road racing bikes.



PRODUCT FEATURES

Wheel	700c	Available for 700c wheel	OCR	Equipped with OCR system
	29	Available for 29" wheel	OCR2	Equipped with OCR2 system
	27.5	Available for 27.5" wheel	RA	RA option available
	26	Available for 26" wheel	AIR	Equipped with AIR system
	24	Available for 24" wheel	T	Spring pre-load adjustment available
Material	20	Available for 20" wheel	MAG	Magnesium casting
	ALU	Aluminum casting	C	Spring only, Non adjustable
	V-brake	V-brake boss available	TRL	TRL option available
Brake	Post disc (max)	Post disc mount available with recommended disc diameter	RL	RL option available
	IS disc (max)	IS disc mount available with recommended disc diameter	TNL	TNL option available
	Roller	Roller brake anchor boss available (option)	ML	ML option available
Accessory	Carrier	Front carrier mount available (option)	TQC	Equipped with TQC dropout
	Dynamo	Dynamo mount available	5QR	Equipped with 15mm QR axle.
	PLS	Post Lighting System	1.5" CROWN	1.5" Crown option available
	Cable routing	Cable routing available for hub dynamo cable		

PRODUCT OVERVIEW

	Down Hill	Free Ride	All Mountain	XC 29'er	XC 27.5	XC 26	Dirt Jump	Leisure Sport	Junior	Cross	Trekking	SPEEDY E-Bike	Rear Shock
Taiwan-Made Product	\$\$\$\$\$	KILLAH		CHAMP 29-15	CHAMP 27.5-15								
		STITCH		CHAMP 29	CHAMP 27.5	CHAMP 26							
		ROGUE					FIRST Platinum						
		TITAN 15											
		TITAN											
China-Made Product	\$\$\$			FIRST 29-15	FIRST 27.5-15	FIRST 26	SPACE		FIRST 24	VOGUE			ELEMENT
				FIRST 29	FIRST 27.5								
				AERIAL 29	AERIAL 27.5	AERIAL 26			AERIAL 24	Singel Shock M series	PULSE Air 29/27.5/26		
China-Made Product	\$\$			OMEGA 29	OMEGA 27.5	OMEGA 26				VITA			
				BLAZE 29	BLAZE 27.5	BLAZE 26	DIRT			NOVA	VERSE		
					GILA 27.5	GILA 26		CAPA 26	CAPA 24/20	NEON	SOFI		
										URBAN			

COLOR OPTION

STEERER WEIGHT



DK-8011 SHINY BLACK (YS-728)



DK-8010 MATT BLACK (YS-727)



DK-0011 GLOSS WHITE (YS-701)



DK-0012 PEARL WHITE (YS-775)

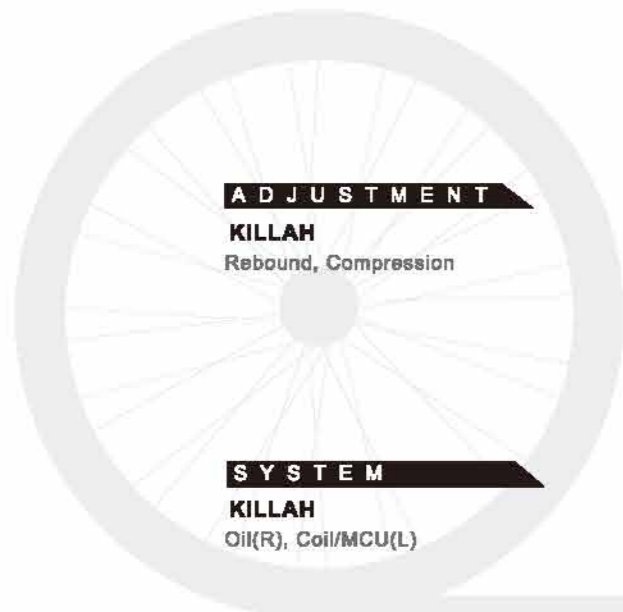


DK-9032 GLOSS SILVER (YS-7605)

Steerer Tube	Length	Weight	
Aluminum 7050	28.6mm	260mm	176g
Aluminum 7050	1.5"	280mm	205g
Aluminum 7050	1.5" Taper	280mm	186g
Hi-ten	28.6mm	260mm	328g
Hi-ten	25.4mm	260mm	290g

DOWNHILL / FREERIDE / AM

Steep descents and technical terrain require top-performance from both riders and their equipment. Durable construction without a major weight penalty and high performance damping systems distinguish these forks ready for the trail, bike park, even a World Cup course.



ADJUSTMENT

KILLAH
Rebound, Compression

SYSTEM

KILLAH
Oil(R), Coil/MCU(L)

STANCHION

KILLAH
36mm 7050 Aluminum
Hard Anodize



STEERER

KILLAH
138 mm-Dual

CASTING

KILLAH
Magnesium 20mm
Thru-Axle

ADJUSTMENT

Air
Air, Rebound, Compression

Super
Rebound

SYSTEM

Air
Oil(R), Air(L)

Super
Oil(R), Coil/MCU(L)

STANCHION

Air
36mm 7050 Aluminum
Hard Anodize

Super
36mm Cr-mo Steel
QPQ Black



STEERER

Air
28.6mm 7050 Aluminum

Super
28.6mm Cr-mo steel

CASTING

Air
Magnesium 20mm Thru-Axle

Super
Magnesium 20mm Thru-Axle

KILLAH KILLAH

MODLE
STEERER — 28.6mm 7050 Aluminum

CROWN PITCH — 138 mm-Dual
CROWN — Aluminum Satin Black
STANCHION — 36mm 7050 Aluminum Hard Anodize
CASTING — Magnesium 20mm Thru-Axle
ADJUSTMENT — R, C
FEATURES — Hydraulic Compression,
Rebound adjust

SYSTEM — Oil(R), Coil/MCU(L)
TRAVEL(mm) — 200 mm
BRAKE TYPE — Disc Only
WEIGHT(kg) — 27.5" :3.22
(w/200mm steerer) 26" :3.20

*R: Rebound, C: Compression

STITCH stitch

MODLE	Air	Super
STEERER	— 28.6mm 7050 Aluminum (Optional 1.5" Aluminum steerer tube)	— 28.6mm Cr-mo steel (Optional 1.5" Aluminum steerer tube)

CROWN PITCH	— 138 mm	
CROWN	— Aluminum Black Coating	
STANCHION	— 36mm 7050 Aluminum Hard Anodize	— 36mm Cr-mo Steel QPQ Black
CASTING	— Magnesium 20mm Thru-Axle	
ADJUSTMENT	— A, R, C	— R
FEATURES	— Hydraulic Compression, Rebound adjust, Air Spring	— Hydraulic Rebound adjust

SYSTEM	— Oil(R), Air(L)	— Oil(R), Coil/MCU(L)
TRAVEL(mm)	— 160, 170, 180 mm	
BRAKE TYPE	— Disc Only	
WEIGHT(kg)	— 27.5" :2.28 (w/200mm steerer) 26" :2.26	— 27.5" :2.78 26" :2.76

*A: Air, R: Rebound, C: Compression

*Steerer tube options: A.1.5" Straight Aluminum B. 1.5" to 1 1/8 Tapered Aluminum

ADJUSTMENT

Air TRL

Air, Rebound, Remote Lockout

Air

Air, Rebound, Lockout, Compression

SYSTEM

Air TRL

Oil(R), Air(L)

Air

Oil(R), Air(L)

STANCHION

Air TRL

34mm 7050 Aluminum
Hard Anodize

Air

34mm 7050 Aluminum
Hard Anodize



STEERER

Air TRL

28.6mm 7050 Aluminum

Air

28.6mm 7050 Aluminum

CASTING

Air TRL

Magnesium 15mm QR

Air

Magnesium 15mm QR

ROGUE



MODLE	Air TRL	Air
STEERER	28.6mm 7050 Aluminum (Optional 1.5" Aluminum steerer tube)	
CROWN PITCH	130 mm	
CROWN	Aluminum Black Coating	
STANCHION	34mm 7050 Aluminum Hard Anodize	
CASTING	Magnesium 15mm QR	
ADJUSTMENT	A, R, RL	A, R, L, C
FEATURES	Hydraulic Rebound adjust, Remote Lock-out, Air Spring	Hydraulic Compression, Rebound adjust, Lock-out, Air Spring
SYSTEM	Oil(R), Air(L)	
TRAVEL(mm)	140, 150, 160 mm	
BRAKE TYPE	Disc Only	
WEIGHT(kg)	27.5" :2.02 (w/200mm steerer) 26" :2.00	27.5" :2.00 26" :1.98

*A: Air, R: Rebound, C: Compression, RL: Remote Lock-out, L: Lock-out

*Steerer tube options: A.1.5" Straight Aluminum B. 1.5" to 1 1/8 Tapered Aluminum

TITAN 15



MODLE	Air TRL	Air
STEERER	28.6mm 7050 Aluminum (Optional 1.5" Aluminum steerer tube)	
CROWN PITCH	130 mm	
CROWN	Aluminum Black Coating	
STANCHION	32mm 7050 Aluminum Hard Anodize	
CASTING	Magnesium 15mm QR	
ADJUSTMENT	A, R, RL	A, R, L, C
FEATURES	Hydraulic Rebound adjust, Remote Lock-out, Air Spring	Hydraulic Compression, Rebound adjust, Lock-out, Air Spring
SYSTEM	Oil(R), Air(L)	
TRAVEL(mm)	140, 150 mm	
BRAKE TYPE	Disc Only	
WEIGHT(kg)	2.16 (w/200mm steerer)	2.14

*A: Air, R: Rebound, C: Compression, RL: Remote Lock-out, L: Lock-out

*Steerer tube options: A.1.5" Straight Aluminum B. 1.5" to 1 1/8 Tapered Aluminum

TITAN



MODLE	Air TRL	Air
STEERER	28.6mm 7050 Aluminum (Optional 1.5" Aluminum steerer tube)	
CROWN PITCH	130 mm	
CROWN	Aluminum Black Coating	
STANCHION	32mm 7050 Aluminum Hard Anodize	
CASTING	Magnesium 9mm Open Dropout	
ADJUSTMENT	A, R, RL	A, R, L, C
FEATURES	Hydraulic Rebound adjust, Remote Lock-out, Air Spring	Hydraulic Compression, Rebound adjust, Lock-out, Air Spring
SYSTEM	Oil(R), Air(L)	
TRAVEL(mm)	140 mm	
BRAKE TYPE	Disc or Disc & V-brake	
WEIGHT(kg)	2.01 (w/200mm steerer)	1.99

*A: Air, R: Rebound, C: Compression, RL: Remote Lock-out, L: Lock-out

*Steerer tube options: A.1.5" Straight Aluminum B. 1.5" to 1 1/8 Tapered Aluminum

singltrek®

RST EUROPEAN TEST CENTRE
SINGLTREK POD SMRKEM

XC / ATB

Lightweight and efficient suspension from 80mm to 120mm distinguish the XC and touring lineups. Forks with a perfectly balanced mixture of comfort, performance and trail control ready for enjoying your local trail network to competing in the toughest race events.



ADJUSTMENT

29-15 TRL

Air, Rebound, Remote Lockout

29-15

Air, Rebound, Lockout, Compression

SYSTEM

29-15 TRL

Oil(R), Air(L)

29-15

Oil(R), Air(L)

STANCHION

29-15 TRL

32mm 7050 Aluminum
Hard Anodize

29-15

32mm 7050 Aluminum
Hard Anodize

STEERER

29-15 TRL

28.6mm 7050 Aluminum

29-15

28.6mm 7050 Aluminum

ADJUSTMENT

29 TRL

Air, Rebound, Remote Lockout

29

Air, Rebound, Lockout, Compression

SYSTEM

29 TRL

Oil(R), Air(L)

29

Oil(R), Air(L)

STANCHION

29 TRL

32mm 7050 Aluminum
Hard Anodize

29

32mm 7050 Aluminum
Hard Anodize

CASTING

29-15 TRL

Magnesium 15mm QR

29-15

Magnesium 15mm QR

STEERER

29 TRL

28.6mm 7050 Aluminum

29

28.6mm 7050 Aluminum



CHAMP 29



CHAMP 29-15



MODLE	29-15 TRL	29-15
STEERER	28.6mm 7050 Aluminum (Optional 1.5" Aluminum steerer tube)	
CROWN PITCH	130 mm	
CROWN	Aluminum Black Coating	
STANCHION	32mm 7050 Aluminum Hard Anodize	
CASTING	Magnesium 15mm QR	
ADJUSTMENT	A, R, RL	A, R, L, C
FEATURES	Hydraulic Rebound adjust, Remote Lock-out, Air Spring	Hydraulic Compression, Rebound adjust, Lock-out, Air Spring
SYSTEM	Oil(R), Air(L)	
TRAVEL(mm)	80, 100, 120 mm	
BRAKE TYPE	Disc Only	
WEIGHT(kgs) (w/200mm steerer)	1.82	1.80

*A: Air, R: Rebound, C: Compression, RL: Remote Lock-out, L: Lock-out

*Steerer tube options: A. 1.5" Straight Aluminum B. 1.5" to 1 1/8 Tapered Aluminum

MODLE	29 TRL	29
STEERER	28.6mm 7050 Aluminum (Optional 1.5" Aluminum steerer tube)	
CROWN PITCH	130 mm	
CROWN	Aluminum Black Coating	
STANCHION	32mm 7050 Aluminum Hard Anodize	
CASTING	Magnesium 9mm Open Dropout	
ADJUSTMENT	A, R, RL	A, R, L, C
FEATURES	Hydraulic Rebound adjust, Remote Lock-out, Air Spring	Hydraulic Compression, Rebound adjust, Lock-out, Air Spring
SYSTEM	Oil(R), Air(L)	
TRAVEL(mm)	80, 100, 120 mm	
BRAKE TYPE	Disc Only	
WEIGHT(kgs) (w/200mm steerer)	1.63	1.61

*A: Air, R: Rebound, C: Compression, RL: Remote Lock-out, L: Lock-out

*Steerer tube options: A. 1.5" Straight Aluminum B. 1.5" to 1 1/8 Tapered Aluminum

ADJUSTMENT**27.5-15 TRL**

Air, Rebound, Remote Lockout

27.5-15

Air, Rebound, Lockout, Compression

SYSTEM**27.5-15 TRL**

Oil(R), Air(L)

27.5-15

Oil(R), Air(L)

STANCHION**27.5-15 TRL**32mm 7050 Aluminum
Hard Anodize**27.5-15**32mm 7050 Aluminum
Hard Anodize**STEERER****27.5-15 TRL**

28.6mm 7050 Aluminum

27.5-15

28.6mm 7050 Aluminum

CASTING**27.5-15 TRL**

Magnesium 15mm QR

27.5-15

Magnesium 15mm QR

**CHAMP****ADJUSTMENT****27.5 TRL**

Air, Rebound, Remote Lockout

27.5

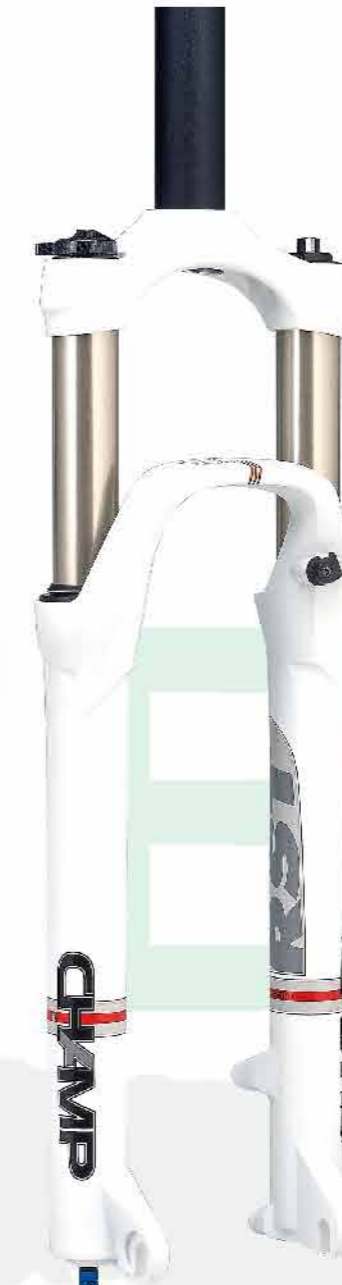
Air, Rebound, Lockout, Compression

SYSTEM**27.5 TRL**

Oil(R), Air(L)

27.5

Oil(R), Air(L)

STANCHION**27.5 TRL**32mm 7050 Aluminum
Hard Anodize**27.5**32mm 7050 Aluminum
Hard Anodize**CHAMP****STEERER****27.5 TRL**

28.6mm 7050 Aluminum

27.5

28.6mm 7050 Aluminum

CASTING**27.5 TRL**

Magnesium 9mm Open Dropout

27.5

Magnesium 9mm Open Dropout

CHAMP 27.5-15

MODLE	27.5-15 TRL	27.5-15
STEERER	28.6mm 7050 Aluminum (Optional 1.5" Aluminum steerer tube)	
CROWN PITCH	130 mm	
CROWN	Aluminum Black Coating	
STANCHION	32mm 7050 Aluminum Hard Anodize	
CASTING	Magnesium 15mm QR	
ADJUSTMENT	A, R, RL	A, R, L, C
FEATURES	Hydraulic Rebound adjust Remote Lock-out, Air Spring	Hydraulic Compression, Rebound adjust, Lock-out, Air Spring
SYSTEM	Oil(R), Air(L)	
TRAVEL(mm)	80, 100, 120 mm	
BRAKE TYPE	Disc Only	
WEIGHT(kg) (w/200mm steerer)	1.67	1.65

*A: Air, R: Rebound, C: Compression, RL: Remote Lock-out, L: Lock-out

*Steerer tube options: A.1.5" Straight Aluminum B. 1.5" to 1 1/8 Tapered Aluminum

CHAMP 27.5

MODLE	27.5 TRL	27.5
STEERER	28.6mm 7050 Aluminum (Optional 1.5" Aluminum steerer tube)	
CROWN PITCH	130 mm	
CROWN	Aluminum Black Coating	
STANCHION	32mm 7050 Aluminum Hard Anodize	
CASTING	Magnesium 9mm Open Dropout	
ADJUSTMENT	A, R, RL	A, R, L, C
FEATURES	Hydraulic Rebound adjust, Remote Lock-out, Air Spring	Hydraulic Compression, Rebound adjust, Lock-out, Air Spring
SYSTEM	Oil(R), Air(L)	
TRAVEL(mm)	80, 100, 120 mm	
BRAKE TYPE	Disc Only	
WEIGHT(kg) (w/200mm steerer)	1.62	1.60

*A: Air, R: Rebound, C: Compression, RL: Remote Lock-out, L: Lock-out

*Steerer tube options: A.1.5" Straight Aluminum B. 1.5" to 1 1/8 Tapered Aluminum

ADJUSTMENT

- 26 TRL**
Air, Rebound, Remote Lockout
- 26**
Air, Rebound, Lockout, Compression

SYSTEM

- 26 TRL**
Oil(R), Air(L)
- 26**
Oil(R), Air(L)

STANCHION

- 26 TRL**
32mm 7050 Aluminum
Hard Anodize
- 26**
32mm 7050 Aluminum
Hard Anodize



STEERER

- 26 TRL**
28.6mm 7050 Aluminum
- 26**
28.6mm 7050 Aluminum

CASTING

- 26 TRL**
Magnesium 9mm Open Dropout
- 26**
Magnesium 9mm Open Dropout

CHAMP

CHAMP 26

MODEL	26 TRL	26
STEERER	28.6mm 7050 Aluminum (Optional 1.5" Aluminum steerer tube)	
CROWN PITCH	130 mm	
CROWN	Aluminum Black Coating	
STANCHION	32mm 7050 Aluminum Hard Anodize	
CASTING	Magnesium 9mm Open Dropout	
ADJUSTMENT	A, R, RL	A, R, L, C
FEATURES	Hydraulic Rebound adjust, Remote Lock-out, Air Spring	Hydraulic Compression, Rebound adjust, Lock-out, Air Spring
SYSTEM	Oil(R), Air(L)	
TRAVEL(mm)	80, 100, 120 mm	
BRAKE TYPE	Disc Only	
WEIGHT(kg) (w/200mm steerer)	1.53	1.51

*A: Air, R: Rebound, C: Compression, RL: Remote Lock-out, L: Lock-out

*Steerer tube options: A. 1.5" Straight Aluminum B. 1.5" to 1 1/8 Tapered Aluminum

ADJUSTMENT

- 29-15 TRL**
Air, Rebound, Remote Lockout
- 29-15**
Air, Rebound, Lockout, Compression

SYSTEM

- 29-15 TRL**
Oil(R), Air(L)
- 29-15**
Oil(R), Air(L)

STANCHION

- 29-15 TRL**
32mm 7050 Aluminum
Hard Anodize
- 29-15**
32mm 7050 Aluminum
Hard Anodize

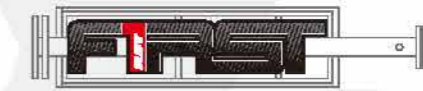


STEERER

- 29-15 TRL**
28.6mm 7050 Aluminum
- 29-15**
28.6mm 7050 Aluminum

CASTING

- 29-15 TRL**
Magnesium 15mm QR
- 29-15**
Magnesium 15mm QR



FIRST 29-15

MODEL	29-15 TRL	29-15
STEERER	28.6mm 7050 Aluminum (Optional 1.5" Aluminum steerer tube)	
CROWN PITCH	130 mm	
CROWN	Aluminum Black Coating	
STANCHION	32mm 7050 Aluminum Hard Anodize	
CASTING	Magnesium 15mm QR	
ADJUSTMENT	A, R, RL	A, R, L, C
FEATURES	Hydraulic Rebound adjust, Remote Lock-out, Air Spring	Hydraulic Compression, Rebound adjust, Lock-out, Air Spring
SYSTEM	Oil(R), Air(L)	
TRAVEL(mm)	80, 100, 120 mm	
BRAKE TYPE	Disc Only	
WEIGHT(kg) (w/200mm steerer)	2.15	2.13

*A: Air, R: Rebound, C: Compression, RL: Remote Lock-out, L: Lock-out

*Steerer tube options: A. 1.5" Straight Aluminum B. 1.5" to 1 1/8 Tapered Aluminum



ADJUSTMENT

29 TRL
Air, Rebound, Remote Lockout
29
Air, Rebound, Lockout, Compression

SYSTEM

29 TRL
Oil(R), Air(L)
29
Oil(R), Air(L)

STANCHION

29 TRL
32mm 7050 Aluminum
Hard Anodize
29
32mm 7050 Aluminum
Hard Anodize

STEERER

29 TRL
28.6mm 7050 Aluminum
29
28.6mm 7050 Aluminum

CASTING

29 TRL
Magnesium 9mm Open Dropout
29
Magnesium 9mm Open Dropout



FIRST 29

MODEL	29 TRL	29
STEERER	28.6mm 7050 Aluminum (Optional 1.5" Aluminum steerer tube)	
CROWN PITCH	130 mm	
CROWN	Aluminum Black Coating	
STANCHION	32mm 7050 Aluminum Hard Anodize	
CASTING	Magnesium 9mm Open Dropout	
ADJUSTMENT	A, R, RL	A, R, L, C
FEATURES	Hydraulic Rebound adjust, Remote Lock-out, Air Spring	Hydraulic Compression, Rebound adjust, Lock-out, Air Spring
SYSTEM	Oil(R), Air(L)	
TRAVEL(mm)	80, 100, 120 mm	
BRAKE TYPE	Disc Only	
WEIGHT(kg) (w/200mm steerer)	1.96	1.94

*A: Air, R: Rebound, C: Compression, RL: Remote Lock-out, L: Lock-out
*Steerer tube options: A.1.5" Straight Aluminum B. 1.5" to 1 1/8 Tapered Aluminum



ADJUSTMENT

27.5-15 TRL
Air, Rebound, Remote Lockout
27.5-15
Air, Rebound, Lockout, Compression

SYSTEM

27.5-15 TRL
Oil(R), Air(L)
27.5-15
Oil(R), Air(L)

STANCHION

27.5-15 TRL
32mm 7050 Aluminum
Hard Anodize
27.5-15
32mm 7050 Aluminum
Hard Anodize

STEERER

27.5-15 TRL
28.6mm 7050 Aluminum
27.5-15
28.6mm 7050 Aluminum

CASTING

27.5-15 TRL
Magnesium 15mm QR
27.5-15
Magnesium 15mm QR



FIRST 27.5-15

MODEL	27.5-15 TRL	27.5-15
STEERER	28.6mm 7050 Aluminum (Optional 1.5" Aluminum steerer tube)	
CROWN PITCH	130 mm	
CROWN	Aluminum Black Coating	
STANCHION	32mm 7050 Aluminum Hard Anodize	
CASTING	Magnesium 15mm QR	
ADJUSTMENT	A, R, RL	A, R, L, C
FEATURES	Hydraulic Rebound adjust, Remote Lock-out, Air Spring	Hydraulic Compression, Rebound adjust, Lock-out, Air Spring
SYSTEM	Oil(R), Air(L)	
TRAVEL(mm)	80, 100, 120 mm	
BRAKE TYPE	Disc Only	
WEIGHT(kg) (w/200mm steerer)	1.98	1.96

*A: Air, R: Rebound, C: Compression, RL: Remote Lock-out, L: Lock-out
*Steerer tube options: A.1.5" Straight Aluminum B. 1.5" to 1 1/8 Tapered Aluminum



ADJUSTMENT

27.5 TRL
Air, Rebound, Remote Lockout
27.5
Air, Rebound, Lockout, Compression

SYSTEM

27.5 TRL
Oil(R), Air(L)
27.5
Oil(R), Air(L)

STANCHION

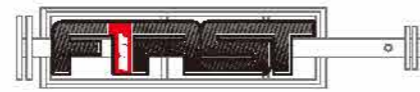
27.5 TRL
32mm 7050 Aluminum
Hard Anodize
27.5
32mm 7050 Aluminum
Hard Anodize

STEERER

27.5 TRL
28.6mm 7050 Aluminum
27.5
28.6mm 7050 Aluminum

CASTING

27.5 TRL
Magnesium 9mm Open Dropout
27.5
Magnesium 9mm Open Dropout



F1RST 27.5

MODLE	27.5 TRL	27.5
STEERER	28.6mm 7050 Aluminum (Optional 1.5" Aluminum steerer tube)	
CROWN PITCH	130 mm	
CROWN	Aluminum Black Coating	
STANCHION	32mm 7050 Aluminum Hard Anodize	
CASTING	Magnesium 9mm Open Dropout	
ADJUSTMENT	A, R, RL	A, R, L, C
FEATURES	Hydraulic Rebound adjust, Remote Lock-out, Air Spring	Hydraulic Compression, Rebound adjust, Lock-out, Air Spring
SYSTEM	Oil(R), Air(L)	
TRAVEL(mm)	80, 100, 120 mm	
BRAKE TYPE	Disc Only	
WEIGHT(kg) (w/200mm steerer)	1.93	1.91

*A: Air, R: Rebound, C: Compression, RL: Remote Lock-out, L: Lock-out
*Steerer tube options: A.1.5" Straight Aluminum B. 1.5" to 1 1/8 Tapered Aluminum



ADJUSTMENT

Platinum TRL
Air, Rebound, Remote Lockout
Platinum
Air, Rebound, Lockout, Compression

SYSTEM

Platinum TRL
Oil(R), Air(L)
Platinum
Oil(R), Air(L)

STANCHION

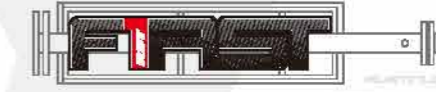
Platinum TRL
30mm 7050 Aluminum
Hard Anodize
Platinum
30mm 7050 Aluminum
Hard Anodize

STEERER

Platinum TRL
28.6mm 7050 Aluminum
Platinum
28.6mm 7050 Aluminum

CASTING

Platinum TRL
Magnesium 9mm Open Dropout
Platinum
Magnesium 9mm Open Dropout



F1RST Platinum

MODLE	Platinum TRL	Platinum
STEERER	28.6mm 7050 Aluminum (Optional 1.5" Aluminum steerer tube)	
CROWN PITCH	130 mm	
CROWN	Aluminum Black Coating	
STANCHION	30mm 7050 Aluminum Hard Anodize	
CASTING	Magnesium 9mm Open Dropout	
ADJUSTMENT	A, R, RL	A, R, L, C
FEATURES	Hydraulic Rebound adjust, Remote Lock-out, Air Spring	Hydraulic Compression, Rebound adjust, Lock-out, Air Spring
SYSTEM	Oil(R), Air(L)	
TRAVEL(mm)	80, 100 mm	
BRAKE TYPE	Disc or Disc & V-brake	
WEIGHT(kg) (w/200mm steerer)	1.52	1.50

*A: Air, R: Rebound, C: Compression, RL: Remote Lock-out, L: Lock-out
*Steerer tube options: A.1.5" Straight Aluminum B. 1.5" to 1 1/8 Tapered Aluminum



F1RST 26



MODEL	26 TRL	26
STEERER	28.6mm 7050 Aluminum (Optional 1.5" Aluminum steerer tube)	
CROWN PITCH	130 mm	
CROWN	Aluminum Black Coating	
STANCHION	32mm 7050 Aluminum Hard Anodize	
CASTING	Magnesium 9mm Open Dropout	
ADJUSTMENT	A, R, RL	A, R, L, C
FEATURES	Hydraulic Rebound adjust, Remote Lock-out, Air Spring	Hydraulic Compression, Rebound adjust, Lock-out, Air Spring
SYSTEM	Oil(R), Air(L)	
TRAVEL(mm)	80, 100, 120 mm	
BRAKE TYPE	Disc or Disc & V-brake	
WEIGHT(kgs) (w/200mm steerer)	1.82	1.80

*A: Air, R: Rebound, C: Compression, RL: Remote Lock-out, L: Lock-out
*Steerer tube options: A. 1.5" Straight Aluminum B. 1.5" to 1 1/8 Tapered Aluminum

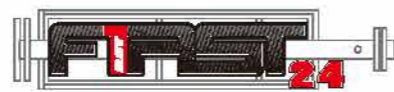


AERIAL 29

MODEL	RL	TNL	ML
STEERER	28.6mm 7050 Aluminum (Optional 1.5" Aluminum steerer tube)		
CROWN PITCH	130 mm		
CROWN	Aluminum Black Coating		
STANCHION	32mm steel QPQ black		
CASTING	Magnesium 9mm Open Dropout		
ADJUSTMENT	A, RL	A, L	A, L
FEATURES	Hydraulic Remote Lock-out, Air Spring	Hydraulic Lock-out, Air Spring	Mechanical Lock-out, Air Spring
SYSTEM	Oil(R), Air(L)		Air
TRAVEL(mm)	80, 100, 120 mm		
BRAKE TYPE	Disc Only		
WEIGHT(kgs) (w/200mm steerer)	2.34	2.28	2.05

*A: Air, RL: Remote Lock-out, L: Lock-out
*Steerer tube options: A. 1.5" Straight Aluminum B. 1.5" to 1 1/8 Tapered Aluminum

F1RST 24



MODEL	24 TRL	24
STEERER	28.6mm 7050 Aluminum	
CROWN PITCH	125 mm	
CROWN	Aluminum Black Coating	
STANCHION	28.6mm 7050 Aluminum Hard Anodize	
CASTING	Magnesium 9mm Open Dropout	
ADJUSTMENT	A, R, RL	A, R, L, C
FEATURES	Hydraulic Rebound adjust, Remote Lock-out, Air Spring	Hydraulic Compression, Rebound adjust, Lock-out, Air Spring
SYSTEM	Oil(R), Air(L)	
TRAVEL(mm)	80 mm	
BRAKE TYPE	Disc & V-brake	
WEIGHT(kgs) (w/200mm steerer)	1.62	1.60

*A: Air, R: Rebound, C: Compression, RL: Remote Lock-out, L: Lock-out





AERIAL 27.5

MODLE	RL	TNL	ML
STEERER	28.6mm 7050 Aluminum (Optional 1.5" Aluminum steerer tube)		
CROWN PITCH	130 mm		
CROWN	Aluminum Black Coating		
STANCHION	32mm Steel QPQ black		
CASTING	Magnesium 9mm Open Dropout		
ADJUSTMENT	A, RL	A, L	A, L
FEATURES	Hydraulic Remote Lock-out, Air Spring	Hydraulic Lock-out, Air Spring	Mechanical Lock-out, Air Spring
SYSTEM	Oil(R), Air(L)		Air
TRAVEL(mm)	80, 100, 120 mm		
BRAKE TYPE	Disc Only		
WEIGHT(kg) (w/200mm steerer)	2.26	2.20	2.00
*A: Air, RL: Remote Lock-out, L: Lock-out			
*Steerer tube options: A. 1.5" Straight Aluminum B. 1.5" to 1 1/8 Tapered Aluminum			



AERIAL 26

MODLE	RL	TNL	ML
STEERER	28.6mm 7050 Aluminum (Optional 1.5" Aluminum steerer tube)		
CROWN PITCH	130 mm		
CROWN	Aluminum Black Coating		
STANCHION	32mm Steel QPQ black		
CASTING	Magnesium 9mm Open Dropout		
ADJUSTMENT	A, RL	A, L	A, L
FEATURES	Hydraulic Remote Lock-out, Air Spring	Hydraulic Lock-out, Air Spring	Mechanical Lock-out, Air Spring
SYSTEM	Oil(R), Air(L)		Air
TRAVEL(mm)	80, 100, 120 mm		
BRAKE TYPE	Disc or Disc & V-brake		
WEIGHT(kg) (w/200mm steerer)	2.31	2.25	2.02
*A: Air, RL: Remote Lock-out, L: Lock-out			
*Steerer tube options: A. 1.5" Straight Aluminum B. 1.5" to 1 1/8 Tapered Aluminum			



AERIAL 24

MODLE	RL	TNL	ML
STEERER	28.6mm 7050 Aluminum		
CROWN PITCH	125 mm		
CROWN	Aluminum Black Coating		
STANCHION	28.6mm Steel QPQ black		
CASTING	Magnesium 9mm Open Dropout		
ADJUSTMENT	A, RL	A, L	A, L
FEATURES	Hydraulic Remote Lock-out, Air Spring	Hydraulic Lock-out, Air Spring	Mechanical Lock-out, Air Spring
SYSTEM	Oil(R), Air(L)		Air
TRAVEL(mm)	60 mm		
BRAKE TYPE	Disc & V-brake		
WEIGHT(kg) (w/200mm steerer)	1.99	1.93	1.73
*A: Air, RL: Remote Lock-out, L: Lock-out			





OMEGA 29



MODEL	RL	TNL	ML	T
STEERER	28.6mm Steel			
CROWN PITCH	130 mm			
CROWN	Aluminum ED Black			
STANCHION	32mm Steel Ti color			
CASTING	Magnesium 9mm Open Dropout			
ADJUSTMENT	RL, P(easy preload)	L, P(easy preload)	L, P(easy preload)	P(easy preload)
FEATURES	Hydraulic Remote Lock-Out	Hydraulic Lock-Out	Mechanical Lock-Out	—
SYSTEM	Oil(R), Coil(L)		Coil	
TRAVEL(mm)	80, 100, 120 mm			
BRAKE TYPE	Disc Only			
WEIGHT(kg) (w/200mm steerer)	2.55	2.47	2.24	2.24

*RL: Remote Lock-out, L: Lock-out, P: Preload



OMEGA 27.5



MODEL	RL	TNL	ML	T
STEERER	28.6mm Steel			
CROWN PITCH	130 mm			
CROWN	Aluminum ED Black			
STANCHION	32mm Steel Ti color			
CASTING	Magnesium 9mm Open Dropout			
ADJUSTMENT	RL, P(easy preload)	L, P(easy preload)	L, P(easy preload)	P(easy preload)
FEATURES	Hydraulic Remote Lock-Out	Hydraulic Lock-Out	Mechanical Lock-Out	—
SYSTEM	Oil(R), Coil(L)		Coil	
TRAVEL(mm)	80, 100, 120 mm			
BRAKE TYPE	Disc Only			
WEIGHT(kg) (w/200mm steerer)	2.36	2.30	2.07	2.07

*RL: Remote Lock-out, L: Lock-out, P: Preload



OMEGA 26



MODEL	RL	TNL	ML	T
STEERER	28.6mm Steel			
CROWN PITCH	130 mm			
CROWN	Aluminum ED Black			
STANCHION	30mm Steel Ti color			
CASTING	Magnesium 9mm Open Dropout			
ADJUSTMENT	RL, P(easy preload)	L, P(easy preload)	L, P(easy preload)	P(easy preload)
FEATURES	Hydraulic Remote Lock-Out	Hydraulic Lock-Out	Mechanical Lock-Out	—
SYSTEM	Oil(R), Coil(L)		Coil	
TRAVEL(mm)	80, 100, 120 mm			
BRAKE TYPE	Disc or Disc & V-brake			
WEIGHT(kg) (w/200mm steerer)	2.44	2.37	2.11	2.11

*RL: Remote Lock-out, L: Lock-out, P: Preload



BLAZE 29



MODLE	RL	TNL	ML	T
STEERER	28.6mm Steel			
CROWN PITCH	130 mm			
CROWN	Aluminum ED Black			
STANCHION	30mm Steel CP Finish			
CASTING	Aluminum 9mm Open Dropout			
ADJUSTMENT	RL, P	L, P	L, P	P
FEATURES	Hydraulic Remote Lock-Out	Hydraulic Lock-Out	Mechanical Lock-Out	—
SYSTEM	Oil(R), Coil(L)			Coil
TRAVEL(mm)	80, 100, 120 mm			
BRAKE TYPE	Disc or Disc & V-brake			
WEIGHT(kg) (w/200mm steerer)	2.90	2.84	2.61	2.61

*RL: Remote Lock-out, L: Lock-out, P: Preload



BLAZE 27.5



MODLE	RL	TNL	ML	T
STEERER	28.6mm Steel			
CROWN PITCH	130 mm			
CROWN	Aluminum ED Black			
STANCHION	30mm Steel CP Finish			
CASTING	Aluminum 9mm Open Dropout			
ADJUSTMENT	RL, P	L, P	L, P	P
FEATURES	Hydraulic Remote Lock-Out	Hydraulic Lock-Out	Mechanical Lock-Out	—
SYSTEM	Oil(R), Coil(L)			Coil
TRAVEL(mm)	80, 100, 120, 130 mm			
BRAKE TYPE	Disc Only			
WEIGHT(kg) (w/200mm steerer)	2.82	2.76	2.51	2.55

*RL: Remote Lock-out, L: Lock-out, P: Preload



BLAZE 26



MODLE	RL	TNL	ML	T
STEERER	28.6mm Steel			
CROWN PITCH	125 mm			
CROWN	Aluminum ED Black			
STANCHION	30mm Steel CP Finish			
CASTING	Aluminum 9mm Open Dropout			
ADJUSTMENT	RL, P	L, P	L, P	P
FEATURES	Hydraulic Remote Lock-Out	Hydraulic Lock-Out	Mechanical Lock-Out	—
SYSTEM	Oil(R), Coil(L)			Coil
TRAVEL(mm)	80, 100, 120 mm			
BRAKE TYPE	Disc or Disc & V-brake			
WEIGHT(kg) (w/200mm steerer)	2.61	2.55	2.33	2.34

*RL: Remote Lock-out, L: Lock-out, P: Preload



GILA 27.5



MODLE	RL	TNL	ML	T
STEERER	28.6mm Steel			
CROWN PITCH	125 mm			
CROWN	Aluminum ED Black			
STANCHION	28.6mm Steel CP Finish			
CASTING	Aluminum 9mm Open Dropout			
ADJUSTMENT	RL, P	L, P	L, P	P
FEATURES	Hydraulic Remote Lock-Out	Hydraulic Lock-Out	Mechanical Lock-Out	—
SYSTEM	Oil(R), Coil(L)			Coil
TRAVEL(mm)	80, 100 mm			
BRAKE TYPE	Disc or Disc & V-brake			
WEIGHT(kg) (w/200mm steerer)	2.50	2.44	2.19	2.14

*RL: Remote Lock-out, L: Lock-out, P: Preload



GILA 26



MODLE	RL	TNL	ML	T
STEERER	28.6mm Steel			
CROWN PITCH	125 mm			
CROWN	Aluminum ED Black			
STANCHION	28.6mm Steel CP Finish			
CASTING	Aluminum 9mm Open Dropout			
ADJUSTMENT	RL, P	L, P	L, P	P
FEATURES	Hydraulic Remote Lock-Out	Hydraulic Lock-Out	Mechanical Lock-Out	—
SYSTEM	Oil(R), Coil(L)			Coil
TRAVEL(mm)	80, 100 mm			
BRAKE TYPE	Disc or Disc & V-brake			
WEIGHT(kg) (w/200mm steerer)	2.41	2.35	2.10	2.05

*RL: Remote Lock-out, L: Lock-out, P: Preload

CAPA



MODLE	ML 26, 24	T 26, 24, 20
STEERER	28.6/25.4mm Steel	
CROWN PITCH	120 mm	
CROWN	Aluminum ED Black	
STANCHION	25.4mm Steel CP Finish	
CASTING	Aluminum 9mm Open Dropout	
ADJUSTMENT	L, P	P
FEATURES	Mechanical Lock-Out	—
SYSTEM	Coil	
TRAVEL(mm)	26":80 mm / 24":50 mm	26":80 mm / 24":50 mm / 20":50 mm
BRAKE TYPE	Disc & V-brake	
WEIGHT(kg) (w/200mm steerer)	ML26": 2.03 / ML24": 1.93	T26": 1.98 / T24": 1.84 / T20": 1.75

*L: Lock-out, P: Preload





DIRT JUMP

The fork series for DIRT riders - Increased durability and ready for air time. Tough, short travel design combined with a top performing damping system make for forks ready to take on the tough lines on the planet.



Photo: Lukas Neasi

Kaprun
Gewerbegebiet

Elektroinstallationen
Elektroanlagen
Antennenanlagen
Paraserv



SPACE



MODLE	Jump	Free
STEERER	28.6mm 7050 Aluminum	28.6mm Cr-mo Steel
CROWN PITCH	138 mm	
CROWN	Aluminum Black Coating	
STANCHION	36mm 7050 Aluminum Hard Anodize	36mm Cr-mo Steel QPQ black
CASTING	Magnesium 20mm Alloy Thru-Axle	
ADJUSTMENT	A, R	R
FEATURES	Hydraulic Rebound adjust, Air Spring	Hydraulic Rebound adjust
SYSTEM	Oil(R), Air(L)	Oil(R), Coil/MCU(L)
TRAVEL(mm)	80, 100 mm	
BRAKE TYPE	Disc Only	
WEIGHT(kg) (w/200mm steerer)	2.63	2.93

*A: Air, R: Rebound

DIRT



MODLE	RA	T
STEERER	28.6mm Steel	
CROWN PITCH	130 mm	
CROWN	Aluminum ED Black	
STANCHION	32mm Steel CP Finish	
CASTING	Aluminum 9mm Open Dropout	
ADJUSTMENT	R, P	P
FEATURES	Hydraulic Rebound adjust	-
SYSTEM	Oil(R), Coil(L)	Coil
TRAVEL(mm)	80, 100, 130 mm	
BRAKE TYPE	Disc or Disc & V-brake	
WEIGHT(kg) (w/200mm steerer)	3.01	3.05

*R: Rebound, P: Preload



CROSS TREKKING

Comfortable forks for touring and city bikes with travel around 50mm.

Efficient suspension forks that include mounting options that allow use of integrated lights, fenders, dynamos and even rollerbrake use.

Carefree technical systems allow convenient daily use.

Testing Standard of E-BIKE / Pedelec

Test requirement

E-BIKE

1. Bending Fatigue test exceeding DIN-EN 14764 (4.9.6): 620N, 100,000 cycles.
2. Emergency braking test:
According to old DIN 79100 - force increased to 1800N.
3. The other test refer to DIN-EN 14781.
4. Test frequency 4 Hz.

Pedelec

1. Bending Fatigue test exceeding DIN-EN 14764(4.9.6):500N, 100,000 cycles.
2. Emergency braking test: According to old DIN79100 - force increased to 1800N.
3. The other test refer to DIN-EN 14764.
4. Test frequency 4 Hz.

ADJUSTMENT

Air TRL

Air, Rebound, Remote Lockout

Air

Air, Rebound, Lockout, Compression

SYSTEM

Air TRL

Oil(R), Air(L)

Air

Oil(R), Air(L)

STANCHION

Air TRL

28.6mm 7050 Aluminum
Hard Anodize

Air

28.6mm 7050 Aluminum
Hard Anodize

STEERER

Air TRL

28.6mm 7050 Aluminum

Air

28.6mm 7050 Aluminum

ADJUSTMENT

RL

Air, Remote Lockout

TNL

Air, Lockout

SYSTEM

RL

Oil(R), Air(L)

TNL

Oil(R), Air(L)

STANCHION

RL

28.6mm steel QPQ black

TNL

28.6mm steel QPQ black

CASTING

Air TRL

Magnesium 9mm Open Dropout

Air

Magnesium 9mm Open Dropout

STEERER

RL

28.6mm 7050 Aluminum

TNL

28.6mm 7050 Aluminum

CASTING

RL

Magnesium 9mm Open Dropout

TNL

Magnesium 9mm Open Dropout

VOGUE



MODLE	Air TRL	Air
STEERER	28.6mm 7050 Aluminum (Optional 1.5" Aluminum steerer tube)	
CROWN PITCH	112 mm	
CROWN	Aluminum Black Coating	
STANCHION	28.6mm 7050 Aluminum Hard Anodize	
CASTING	Magnesium 9mm Open Dropout	
ADJUSTMENT	A, R, RL	A, R, L, C
FEATURES	Hydraulic Rebound adjust, Remote Lock-out, Air Spring	Hydraulic Compression, Rebound adjust, Lock-out, Air Spring
SYSTEM	Oil(R), Air(L)	
TRAVEL(mm)	50, 60, 75 mm	
BRAKE TYPE	Disc or Disc & V-brake	
WEIGHT(kgs) (w/200mm steerer)	1.65	1.63

*L: Lock-out, P: Preload

*Steerer tube options: A.1.5" Straight Aluminum B. 1.5" to 1 1/8 Tapered Aluminum

Suitable for: Pedelec Only

VIVAir



MODLE	RL	TNL
STEERER	28.6mm 7050 Aluminum (Optional 1.5" Aluminum steerer tube)	
CROWN PITCH	112 mm	
CROWN	Aluminum Black Coating	
STANCHION	28.6mm Steel QPQ black	
CASTING	Magnesium 9mm Open Dropout	
ADJUSTMENT	A, RL	A, L
FEATURES	Hydraulic Remote Lock-out, Air Spring	Hydraulic Compression, Rebound adjust, Lock-out, Air Spring
SYSTEM	Oil(R), Air(L)	
TRAVEL(mm)	50, 60 mm	
BRAKE TYPE	Disc or Disc & V-brake	
WEIGHT(kgs) (w/200mm steerer)	2.08	2.02

*A: Air, RL: Remote Lock-out, L: Lock-out

*Steerer tube options: A.1.5" Straight Aluminum B. 1.5" to 1 1/8 Tapered Aluminum



VITA



MODLE	RL	TNL	ML	T
STEERER	28.6 / 25.4mm Steel			
CROWN PITCH	112 mm			
CROWN	Aluminum ED Black			
STANCHION	28.6mm Steel Ti Color			
CASTING	Magnesium 9mm Open Dropout			
ADJUSTMENT	RL, P (easy preload)	L, P (easy preload)	L, P (easy preload)	P (easy preload)
FEATURES	Hydraulic Remote Lock-Out	Hydraulic Lock-Out	Mechanical Lock-Out	—
SYSTEM	Oil(R), Coil(L)		Coil	
TRAVEL(mm)	50, 60 mm			
BRAKE TYPE	Disc or Disc & V-brake			
WEIGHT(kg) (w/200mm steerer)	2.26	2.20	1.98	1.98

*RL: Remote Lock-out, L: Lock-out, P: Preload

Suitable for: Pedelec Only



NEON



MODLE	RL	ML	T
STEERER	28.6 / 25.4mm Steel		
CROWN PITCH	112 mm		
CROWN	Aluminum ED Black		
STANCHION	25.4mm Steel CP Finish		
CASTING	Aluminum 9mm Open Dropout		
ADJUSTMENT	RL, P	L, P	P
FEATURES	Hydraulic Remote Lock-Out	Mechanical Lock-Out	—
SYSTEM	Oil(R), Coil(L)		Coil
TRAVEL(mm)	700C: 50, 60 mm / 26": 75 mm		
BRAKE TYPE	Disc & V-brake		
WEIGHT(kg) (w/200mm steerer)	2.17	1.95	1.94

*RL: Remote Lock-out, L: Lock-out, P: Preload

SOFI



MODLE	RL	ML	T
STEERER	28.6 / 25.4mm Steel		
CROWN PITCH	112 mm		
CROWN	Aluminum ED Black		
STANCHION	25.4mm Steel CP Finish		
CASTING	Aluminum 9mm Open Dropout		
ADJUSTMENT	RL, P	L, P	P
FEATURES	Hydraulic Remote Lock-Out	Mechanical Lock-Out	—
SYSTEM	Oil(R), Coil(L)		Coil
TRAVEL(mm)	700C: 40, 50 mm / 26": 50 mm		
BRAKE TYPE	V-brake only		
WEIGHT(kg) (w/200mm steerer)	2.30	2.06	2.07

*RL: Remote Lock-out, L: Lock-out, P: Preload

Suitable for: Pedelec Only



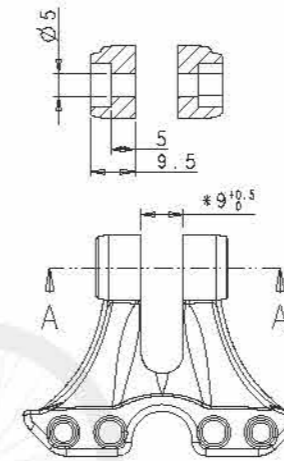
NOVA



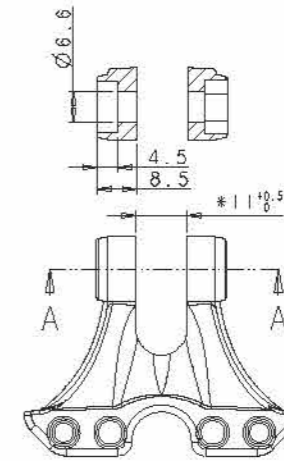
MODLE	RL	ML	T
STEERER	28.6 / 25.4mm Steel		
CROWN PITCH	112 mm		
CROWN	Aluminum ED Black		
STANCHION	28.6mm Steel CP Finish		
CASTING	Aluminum 9mm Open Dropout		
ADJUSTMENT	RL, P	L, P	P
FEATURES	Hydraulic Remote Lock-Out	Mechanical Lock-Out	-
SYSTEM	Oil(R), Coil(L)		Coil
TRAVEL(mm)	50, 60 mm		
BRAKE TYPE	Disc or Disc & V-brake		
WEIGHT(kg) (w/200mm steerer)	2.57	2.30	2.31

*RL: Remote Lock-out, L: Lock-out, P: Preload

Suitable for: E-Bike and Pedelec



#M5GACC0921 (M5*1.0)



#M5GACC0920 (M6*1.0)

#M5GACC0921 for TRELOCK and BASTA using.; #M5GACC0920 for BUMM using

Front Light Maker RST bracket part # Available model

— BUMM	— M5GACC0920 (using M6 Screw)	— LUMOTEC Classic LUMOTEC Lyt B LUMOTEC LYT LUMOTEC IQ Fly (T) LUMOTEC IQ Cyo (T) LUMOTEC rund LUMOTEC Retro LUMOTEC oval
— BASTA	— M5GACC0921 (using M5 Screw)	— Sprint
— TRELOCK	— M5GACC0921 (using M5 Screw)	— LS 850 series / LS 870 series Bird series



VERSE



MODLE	RL	ML	T
STEERER	28.6 / 25.4mm Steel		
CROWN PITCH	112 mm		
CROWN	Aluminum ED Black		
STANCHION	28.6mm Steel CP Finish		
CASTING	Aluminum 9mm Open Dropout		
ADJUSTMENT	RL, P	L, P	P
FEATURES	Hydraulic Remote Lock-Out	Mechanical Lock-Out	-
SYSTEM	Oil(R), Coil(L)		Coil
TRAVEL(mm)	40, 50 mm		
BRAKE TYPE	V-brake only		
WEIGHT(kg) (w/200mm steerer)	2.57	2.30	2.31

*RL: Remote Lock-out, L: Lock-out, P: Preload

Suitable for: E-Bike and Pedelec

URBAN



MODLE	RL	ML	T
STEERER	28.8 / 25.4mm Steel		
CROWN PITCH	112 mm		
CROWN	Aluminum ED Black		
STANCHION	25.4mm Steel CP Finish		
CASTING	Aluminum 9mm Open Dropout		
ADJUSTMENT	RL, P	L, P	P
FEATURES	Hydraulic Remote Lock-Out	Mechanical Lock-Out	-
SYSTEM	Oil(R), Coil(L)		Coil
TRAVEL(mm)	40 mm		
BRAKE TYPE	Roller& Disc brake only, No V-brake available		
WEIGHT(kg) (w/200mm steerer)	2.13	1.86	1.87

*RL: Remote Lock-out, L: Lock-out, P: Preload

Suitable for: Pedelec Only

SINGLE SHOCK-M series



SS-M7

MODLE	SS-M7 T	SS-M7
WHEEL SIZE	700C	
TRAVEL(mm)	30mm	35mm
FEATURES	Mag. Blade Spring Preload	Mag. Blade
STEERER	28.6 mm 7050 Aluminum (Min. Length: 200mm)	
LOWER	Magnesium 9mm Open Dropout	
BRAKE TYPE	Disc + V-brake(Optional Roller Mount)	
WEIGHT(kg) (w/200mm steerer)	1.33	1.33

SS-M6

MODLE	SS-M6 T	SS-M6
WHEEL SIZE	26"	
TRAVEL(mm)	30mm	35mm
FEATURES	Mag. Blade Spring Preload	Mag. Blade
STEERER	28.6 mm 7050 Aluminum (Min. Length: 200mm)	
LOWER	Magnesium 9mm Open Dropout	
BRAKE TYPE	Disc + V-brake(Optional Roller Mount)	
WEIGHT(kg) (w/200mm steerer)	1.18	1.18



SINGLE SHOCK-A series



SS-A7

MODLE	SS-A7 T	SS-A7
WHEEL SIZE	700C	
TRAVEL(mm)	30mm	35mm
FEATURES	Alu. Blade Spring Preload	Alu. Blade
STEERER	28.6 mm 7050 Aluminum (Min. Length: 200mm)	
LOWER	Aluminum 9mm Open Dropout	
BRAKE TYPE	Disc or Disc + V-brake(Optional Roller Mount)	
WEIGHT(kg) (w/200mm steerer)	1.60	1.60

**SS-A7 T / SS-A7 suitable for:
E-Bike and Pedelec**

SS-A6

MODLE	SS-A6 T	SS-A6
WHEEL SIZE	26"	
TRAVEL(mm)	30mm	35mm
FEATURES	Alu. Blade Spring Preload	Alu. Blade
STEERER	28.6 mm 7050 Aluminum (Min. Length: 200mm)	
LOWER	Aluminum 9mm Open Dropout	
BRAKE TYPE	Disc or Disc + V-brake(Optional Roller Mount)	
WEIGHT(kg) (w/200mm steerer)	1.52	1.52

**SS-A6 suitable for: E-Bike and Pedelec
SS-A6 T suitable for: Pedelec only**





SS-A4

MODLE	SS-A4 T	SS-A4
WHEEL SIZE	24"	
TRAVEL(mm)	30mm	35mm
FEATURES	Alu. Blade Spring Preload	Alu. Blade
STEERER	28.6 mm 7050 Aluminum (Min. Length: 200mm)	
LOWER	Aluminum 9mm Open Dropout	
BRAKE TYPE	Disc + V-brake	
WEIGHT(kgs) (w/200mm steerer)	1.45	1.45

SS-A4 suitable for: E-Bike and Pedelec
SS-A4 T suitable for: Pedelec only



RIGID FORK RF-M7 & M6

MODLE	RF-M7	RF-M6
WHEEL SIZE	700C	26"
TRAVEL(mm)	N/A	
FEATURES	Mag. Blade	
STEERER	28.6 mm 7050 Aluminum (Min. Length: 200mm)	
LOWER	Magnesium 9mm Open Dropout	
BRAKE TYPE	Disc + V-brake(Optional Roller Mount)	
WEIGHT(kgs) (w/200mm steerer)	0.83	0.75

RF-M7

SS-A2

MODLE	SS-A2-100	SS-A2-75
WHEEL SIZE	20"	
TRAVEL(mm)	30mm	30mm
FEATURES	Alu. Blade (Straight)	Alu. Blade (Curve)
STEERER	28.6 mm 7050 Aluminum (Min. Length: 200mm)	
LOWER	Aluminum 9mm Open Dropout	
BRAKE TYPE	Disc + V-brake	(Curve)
WEIGHT(kgs) (w/200mm steerer)	1.32	1.28

**SS-A2-100 / SS-A2-75 suitable for:
E-Bike and Pedelec**



ELEMENT

	ELEMENT LO
BODY FINISH	Alloy, Hard Anodized in Black
SPRING	Air
DAMPING	Hydraulic Damping
EYE TO EYES TRAVEL(mm)	150x25, 165x35, 190x45
BOLT DIAMETER	8mm or 6mm
WEIGHT(kgs)	215g(150mm) / 225g(165mm) 245g(190mm)



E-Bike

Motor assisted E-bikes will change our traditional image of a bicycle regarding commuting, travelling, even vacation. They will bring us to work, lift us to the nicest sport on the high mountains. Our new Pulse series will be the perfect product for all those tasks.



E-Bike tour near Füssen im Allgäu
legal notice: "Tourist Information Füssen / Gerhard Eisenschink."

ADJUSTMENT

- Air-RL**
Air, Remote Lockout
- Air-TNL**
Air, Lockout

SYSTEM

- Air-RL**
Oil(R), Air(L)
- Air-TNL**
Oil(R), Air(L)

STANCHION

- Air-RL**
30mm Steel QPQ black
- Air-TNL**
30mm Steel QPQ black

STEERER

- Air-RL**
28.6mm Steel
- Air-TNL**
28.6mm Steel

CASTING

- Air-RL**
Aluminum 9mm Open Dropout
- Air-TNL**
Aluminum 9mm Open Dropout



PULSE

PULSE 29 Air

MODLE	Air-RL	Air-TNL
STEERER	28.6mm Steel	
CROWN PITCH	130 mm	
CROWN	Aluminum ED Black	
STANCHION	30mm Steel QPQ black	
CASTING	Aluminum 9mm Open Dropout	
ADJUSTMENT	RL, P	L, P
FEATURES	Hydraulic Remote Lock-Out, Air Spring	Hydraulic Lock-Out, Air Spring
SYSTEM	Oil(R), Air(L)	
TRAVEL(mm)	50 mm	
BRAKE TYPE	Disc or Disc & V-Brake	
WEIGHT(kg) (w/200mm steerer)	2.89	2.83

*RL: Remote Lock-out, L: Lock-out, P: Preload

**Reflector is available from B&M Model No. 306 KEB.
Fork equipped with Standard Fender Mount Bracket.**



PULSE 27.5 Air

MODLE	Air-RL	Air-TNL
STEERER	28.6mm Steel	
CROWN PITCH	130 mm	
CROWN	Aluminum ED Black	
STANCHION	30mm Steel QPQ black	
CASTING	Aluminum 9mm Open Dropout	
ADJUSTMENT	A, RL	A, L
FEATURES	Hydraulic Remote Lock-Out, Air Spring	Hydraulic Lock-Out, Air Spring
SYSTEM	Oil(R), Air(L)	
TRAVEL(mm)	50 mm	
BRAKE TYPE	Disc Only	
WEIGHT(kgs) (w/200mm steerer)	2.81	2.75

*A: Air, RL: Remote Lock-out, L: Lock-out

**Reflector is available from B&M Model No. 306 KEB.
Fork equipped with Standard Fender Mount Bracket.**

PULSE 26 Air

MODLE	Air-RL	Air-TNL
STEERER	28.6mm Steel	
CROWN PITCH	125 mm	
CROWN	Aluminum ED Black	
STANCHION	30mm Steel QPQ black	
CASTING	Aluminum 9mm Open Dropout	
ADJUSTMENT	A, RL	A, L
FEATURES	Hydraulic Remote Lock-Out, Air Spring	Hydraulic Lock-Out, Air Spring
SYSTEM	Oil(R), Air(L)	
TRAVEL(mm)	50 mm	
BRAKE TYPE	Disc or Disc & V-Brake	
WEIGHT(kgs) (w/200mm steerer)	2.60	2.54

*A: Air, RL: Remote Lock-out, L: Lock-out

**Reflector is available from B&M Model No. 306 KEB.
Fork equipped with Standard Fender Mount Bracket.**



PULSE 29

MODLE	RL	TNL
STEERER	28.6mm Steel	
CROWN PITCH	130 mm	
CROWN	Aluminum ED Black	
STANCHION	30mm Steel QPQ black	
CASTING	Aluminum 9mm Open Dropout	
ADJUSTMENT	RL, P	L, P
FEATURES	Hydraulic Remote Lock-Out	Hydraulic Lock-Out
SYSTEM	Oil(R), Coil(L)	
TRAVEL(mm)	50 mm	
BRAKE TYPE	Disc or Disc & V-Brake	
WEIGHT(kgs) (w/200mm steerer)	2.90	2.84

*RL: Remote Lock-out, L: Lock-out, P: Preload

**Reflector is available from B&M Model No. 306 KEB.
Fork equipped with Standard Fender Mount Bracket.**



PULSE 27.5

MODEL	RL	TNL
STEERER	28.6mm Steel	
CROWN PITCH	130 mm	
CROWN	Aluminum ED Black	
STANCHION	30mm Steel QPQ black	
CASTING	Aluminum 9mm Open Dropout	
ADJUSTMENT	A, RL	A, L
FEATURES	Hydraulic Remote Lock-Out	Hydraulic Lock-Out

SYSTEM	Oil(R), Coil(L)	
TRAVEL(mm)	50 mm	
BRAKE TYPE	Disc Only	
WEIGHT(kgs)	2.82	2.76

*RL: Remote Lock-out, L: Lock-out, P: Preload

**Reflector is available from B&M Model No. 306 KEB.
Fork equipped with Standard Fender Mount Bracket.**



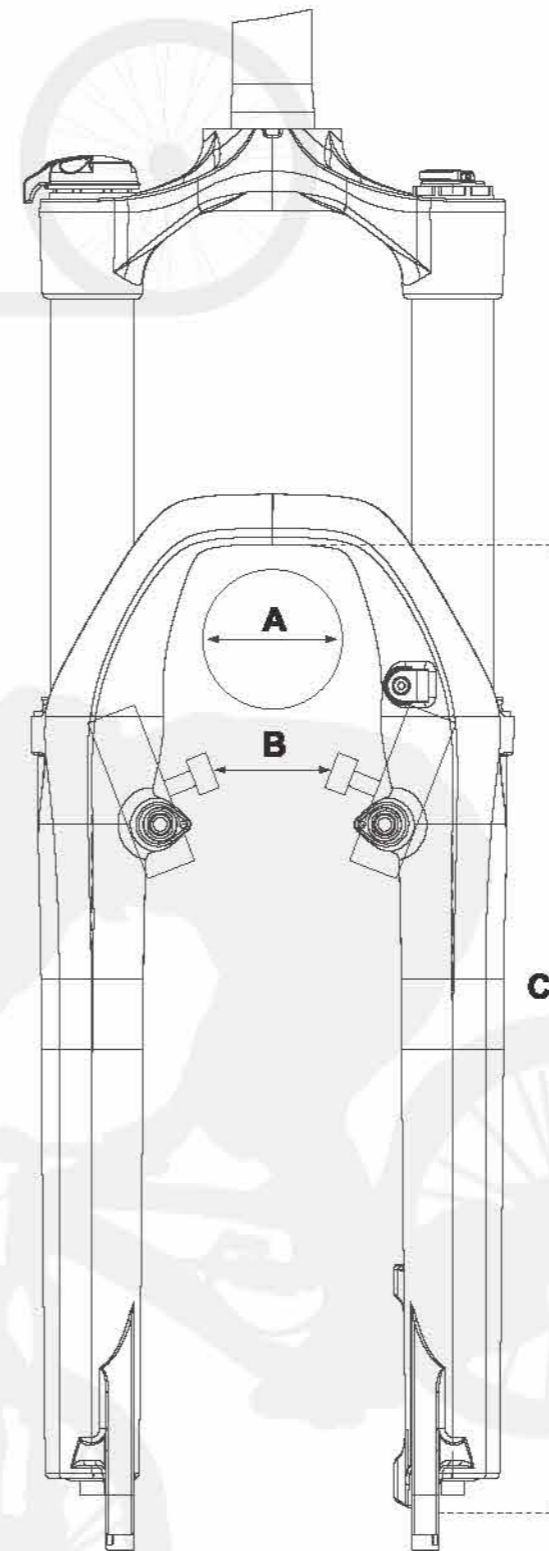
PULSE 26

MODEL	RL	TNL
STEERER	28.6mm Steel	
CROWN PITCH	125 mm	
CROWN	Aluminum ED Black	
STANCHION	30mm Steel QPQ black	
CASTING	Aluminum 9mm Open Dropout	
ADJUSTMENT	A, RL	A, L
FEATURES	Hydraulic Remote Lock-Out	Hydraulic Lock-Out

SYSTEM	Oil(R), Coil(L)	
TRAVEL(mm)	50 mm	
BRAKE TYPE	Disc or Disc & V-Brake	
WEIGHT(kgs)	2.61	2.55

*RL: Remote Lock-out, L: Lock-out, P: Preload

**Reflector is available from B&M Model No. 306 KEB.
Fork equipped with Standard Fender Mount Bracket.**



DIMENSIONS

MODEL NAME	WIDTH A	WIDTH B	WIDTH C	unit: mm
				MAXIMUM ROTOR SIZE
KILLAH 27.5	<69	-	365	203
KILLAH 26	<69	-	365	203
STITCH 27.5	<69	-	365	203
STITCH 26	<69	-	365	203
ROGUE 27.5	<62	-	365	203
ROGUE 26	<62	-	365	203
TITAN 15	<67	-	350	203
TITAN	<67	58	350	203
CHAMP 29-15	<69	-	380	180
CHAMP 29	<69	-	380	180
CHAMP 27-15	<62	-	365	180
CHAMP 27.5	<62	-	365	180
CHAMP 26	<55	58	350	180
FIRST 29-15	<69	-	380	180
FIRST 29	<69	-	380	180
FIRST 27.5-15	<62	-	365	180
FIRST 27.5	<62	-	365	180
FIRST 26	<55	58	350	180
FIRST PLATINUM	<55	58	350	180
FIRST 24	<55	54	317	180
AERIAL 29	<69	-	380	180
AERIAL 27.5	<62	-	365	180
AERIAL 26	<55	58	350	180
AERIAL 24	<55	54	317	180
OMEGA 29	<69	-	380	180
OMEGA 27.5	<62	-	365	180
OMEGA 26	<55	58	350	180
BLAZE 29 / PLUSE 29	<56	63	380	180
BLAZE 27.5 / PLUSE 27.5	<62	-	370	180
BLAZE 26 / PLUSE 26	<58	63	350	180
GILA 27.5	<58	60	365	180
GILA 26	<58	60	350	180
CAPA 26/24/20	<58	60	352/322/289	160
SPACE	<69	-	350	203
DIRT	<56	58	350	180
VOGUE	<55	54	377	180
VIVAir	<55	54	377	180
VITA	<55	54	377	180
NEON 700/26	<55	54	382/360	160
SOFI 700/26	<55	50	375/355	-
NOVA	<55	54	377	180
VERSE	<55	54	377	-
URBAN	<55	-	377	160
SS-M7 / RF-M7	<45	45	380	160
SS-M6 / RF-M6	<50	45	345	160
SS-A7	<45	45	365	180
SS-A6	<50	45	345	160
SS-A4	<45	45	318	160
SS-A2-100	<32	44	265	160
SS-A2-75	<32	38	265	-
via	<30	-	342	160

ROAD RACE

- Fork blade produced in one piece
- Advanced Hydro Forming process
- Material: Aluminum 6061 Series



ROAD RACE



via

MODLE

WHEEL SIZE	700C
TRAVEL(mm)	25mm
FEATURES	Alu. Blade Spring Preload
STEERER	28.6 mm 7050 Aluminum (Min. Length: 200mm)
LOWER	Aluminum 9mm Open Dropout
BRAKE TYPE	Caliper-brake or Disc only
WEIGHT(kg)	1.07 w/(200mm steerer)

AM PACKAGE



The perfect upgrade for your coil spring fork! It covers the widest possible range of riders weight and allows for custom tuning to the riders preference. In addition, it shaves some weight compared to a standard coil spring. Combine easy adjustability with the weight savings and this upgrade is a must have.

Fitments Available For

● 32mm Stanchion Forks	#H5GDPCDC2012-2	OMEGA 29 / 27.5 AERIAL 29 / 27.5
● 32mm Stanchion Forks	#H5GDPCDC2012-1	AERIAL 26
● 30mm Stanchion Forks	#H5GDPCDC2012-3	OMEGA 26 AERIAL 26 All BLAZE series

Air Cartridge Upgrade Kit

High Pressure Air-Pump

RST's on inflation pump for suspension forks and rear shocks. A must have for shops, mechanics, and basically all RST Air fork riders. Dial in the perfect tune on your ride.

Fitments Available For

● Air-Pump	#H5PFGP-2200-200	All RST Air forks
------------	------------------	-------------------



Keep your suspension performing at its peak. Genuine RST grease was developed to withstand the most severe conditions. A perfectly balanced, lithium free suspension lubricant to retain that factory fresh performance of your RST fork. To be used for all suggested maintenance intervals.

Fitments Available For

● Lubrication Kit 50g	#H5GACB182	All RST models
-----------------------	------------	----------------

GREASE

Spring Seals

Only use genuine RST seals to keep your fork performing at its peak. Spring energized lip-seals keep the dust out and the grease in. The dust seals need to be replaced when worn.

Fitments Available For

● Seals for 36mm	#H5GBH8CFC1	KILLAH, STITCH, SPACE
● Seals for 32mm	#H5GBH8CEC1	TITAN, TITAN 15, CHAMP 29 / 26 / 27.5 F1RST 29 / 26 / 27.5
● Seals for 32mm	#H5GBHBAEC1	AERIAL 29 / 26 / 27.5 OMEGA 29 / 27.5 DIRT
● Seals for 30mm	#H5GBHCCCC1-1	F1RST PLATINUM
● Seals for 30mm	#H5GBH8CDC2	OMEGA 26, BLAZE series
● Seals for 28.6mm	#H5GBH8CCC1	VOGUE, VIVAir, F1RST 24
● Seals for 28.6mm	#H5GBHCCC2	GILA, VITA, NOVA, VERSE
● Seals for 25.4mm	#H5GBHCBC2	CAPA, NEON, SOFI, URBAN



AM PACKAGE



Genuine RST preload adjusters for replacement when something goes wrong. A wide range of adjustment, combined with high reliability, distinguish these adjusters.

Fitments Available For

● Adjuster for 32mm	#H5GAEAB29-1	DIRT
● Adjuster for 32mm	#H5GAE0A29-1	OMEGA 29 / 27.5
● Adjuster for 30mm	#H5GAE0A30-1	OMEGA 26
● Adjuster for 30mm	#H5FVP-2162-100-1	BLAZE series
● Adjuster for 28.6mm	#H5FNM-2163-100-1	GILA , VITA, NOVA, VERSE
● Adjuster for 25.4mm	#H5FNA-2162-100-1	CAPA, NEON, SOFI, URBAN



(For OMEGA series only)

Adjuster(preload)

RST SPECIAL WRENCH

You have to have the right tools to do the job. Genuine RST preload adjusters have a unique shape that makes them stronger and you need the right tool to remove them for spring changes and fork services. One tool conveniently fits all forks past, present and future.

Fitments Available For

● RST wrench for preload adjusters	#H5GAC616	OMEGA, BLAZE, GILA, CAPA, VITA, NOVA, VERSE, NEON, SOFI, URBAN
------------------------------------	-----------	--



Fitments Available For

● Cap for 32mm	#H5GAEDMG29	OMEGA 29 T, OMEGA 27.5 T
● Cap for 30mm	#H5GAEDMG275	OMEGA 26 T, All BLAZE T series
● Cap for 28.6mm	#H5GAE8MG030	GILA T, VITA T, NOVA T, VERSE T
● Cap for 25.4mm	#H5FH2-2340-000	CAPA T, NEON T, SOFI T, URBAN T

Caps

Smart Remote Lock-out (SRL) Upgrade Kit

The SRL Upgrade moves your fork's compression adjustment and lock-out control to a more convenient location, on to your handlebar! The SRL Upgrade still allows the selection of different compression settings but also a locked-out setting at your finger tips while you ride.

The SRL Upgrade Kit can be mounted on most forks with a crown mounted lock-out control.



Fitments Available For

● SRL Upgrade Kit	#H5GDPBARL2011	RST CHAMP, F1RST, TITAN, TITAN 15, and All RST fork with TNL/RL damping
-------------------	----------------	---

Bike Category	Down Hill KILLAH	Free Ride STITCH		Dirt Jump SPACE		All Mountain				
		Air	Super	Jump	Free	Air-TRL	ROGUE	Air	Air-TRL	TITAN 16
Model										
Steerer	28.6mm 7050 Aluminum	28.6mm 7050 Aluminum	28.6mm 7050 Cr-mo steel	28.6mm 7050 Aluminum	28.6mm 7050 Cr-mo steel	28.6mm 7050 Aluminum	28.6mm 7050 Aluminum	28.6mm 7050 Aluminum	28.6mm 7050 Aluminum	28.6mm 7050 Aluminum
1.5" Steerer (Straight or Taper)	—	Option	Option	—	—	Option	Option	Option	Option	Option
Crown	130mm-Dual Aluminum, Satin Black	130mm Aluminum, Black Coating	130mm Aluminum, Black Coating	130mm Aluminum, Black Coating	130mm Aluminum, Black Coating	130mm Aluminum, Black Coating	130mm Aluminum, Black Coating	130mm Aluminum, Black Coating	130mm Aluminum, Black Coating	130mm Aluminum, Black Coating
Stanchion	36mm 7050 Aluminum Hard Anodize	36mm 7050 Aluminum Hard Anodize	36mm 7050 Aluminum Hard Anodize	36mm 7050 Aluminum Hard Anodize	36mm 7050 Aluminum Hard Anodize	36mm 7050 Aluminum Hard Anodize	36mm 7050 Aluminum Hard Anodize	36mm 7050 Aluminum Hard Anodize	36mm 7050 Aluminum Hard Anodize	36mm 7050 Aluminum Hard Anodize
Lower	Magnesium 20mm Thru-axle	Magnesium 20mm Thru-axle	Magnesium 20mm Thru-axle	Magnesium 20mm Thru-axle	Magnesium 20mm Thru-axle	Magnesium 15mm QR	Magnesium 15mm QR	Magnesium 15mm QR	Magnesium 15mm QR	Magnesium 15mm QR
Feature	Hydraulic Compression Rebound-adjust Air spring	Hydraulic Compression Rebound-adjust Air spring	Hydraulic Rebound-adjust	Hydraulic Rebound-adjust Air spring	Hydraulic Rebound-adjust	Hydraulic Rebound-adjust Remote Lock-out Air spring	Hydraulic Rebound-adjust Remote Lock-out Air spring	Hydraulic Rebound-adjust Remote Lock-out Air spring	Hydraulic Rebound-adjust Remote Lock-out Air spring	Hydraulic Rebound-adjust Remote Lock-out Air spring
Damper	OCR+	OCR+	Hydraulic Cartridge	Hydraulic Cartridge	Hydraulic Cartridge	OCR+	OCR+	OCR	OCR	OCR
Spring	Coil	Air	Coil	Air	Coil	Air	Air	Air	Air	Air
Adjustment	R, C	A, R, C	R	A, R	R	A, R, RL	A, R, RL	A, R, RL	A, R, RL	A, R, RL
Travel	200 mm	180, 170, 160 mm	80, 100 mm	80, 100 mm	80, 100 mm	140, 150, 160mm	140, 150, 160mm	140, 150mm	140, 150mm	140, 150mm
Fork offset	43mm	43mm	38mm	38mm	38mm	43mm	43mm	43mm	43mm	43mm
Fork height (mm)	27.5" : 580 26" : 585	27.5" : 555 / 595 / 575 26" : 540 / 550 / 560	485 / 485	485 / 485	485 / 485	27.5" : 635 / 645 / 655 26" : 520 / 530 / 540	27.5" : 635 / 645 / 655 26" : 520 / 530 / 540	27.5" : 635 / 645 / 655 26" : 520 / 530 / 540	27.5" : 635 / 645 / 655 26" : 520 / 530 / 540	27.5" : 635 / 645 / 655 26" : 520 / 530 / 540
Brake Type	Disc only	Disc only	Disc only	Disc only	Disc only	Disc only	Disc only	Disc only	Disc only	Disc only
Disc Brake Mount	Post	Post	IS	IS	IS	Post	Post	Post	Post	Post
Recommended Max. Rotor Size In mm	203	203	203	203	203	203	203	203	203	203
Dynamo Bracket Mount	—	—	—	—	—	—	—	—	—	—
Cable Guide for Hub Dynamo	—	—	—	—	—	—	—	—	—	—
Roller Brake Mount	—	—	—	—	—	—	—	—	—	—
Weight (lbs) (w/steerer at 200mm)	27.5" : 3.22 26" : 3.20	27.5" : 2.28 26" : 2.26	27.5" : 2.78 26" : 2.76	2.63	2.93	27.5" : 2.02 26" : 2.00	27.5" : 2.00 26" : 1.98	27.5" : 2.00 26" : 1.98	27.5" : 2.00 26" : 1.98	27.5" : 2.00 26" : 1.98
Wheel size	27.5" / 26"	27.5" / 26"	26"	26"	26"	27.5" / 26"	27.5" / 26"	26"	26"	26"
Origin of Production	Taiwan	Taiwan	Taiwan	Taiwan	Taiwan	Taiwan	Taiwan	Taiwan	Taiwan	Taiwan
2015 VS 2014	New	New	—	—	—	New	New	—	—	—
Remarks										New 15mm Axle

Bike Category	All Mountain		XC 26er		XC 27.5	
	TITAN	Air	26-15	26-TRL	27.5-15	27.5-TRL
Model						
Steerer	28.6mm 7050 Aluminum	28.6mm 7050 Aluminum	28.6mm 7050 Aluminum	28.6mm 7050 Aluminum	28.6mm 7050 Aluminum	28.6mm 7050 Aluminum
1.5" Steerer (Straight or Taper)	Option	Option	Option	Option	Option	Option
Crown	130mm Aluminum, Black Coating	130mm Aluminum, Black Coating	130mm Aluminum, Black Coating	130mm Aluminum, Black Coating	130mm Aluminum, Black Coating	130mm Aluminum, Black Coating
Stanchion	32mm 7050 Aluminum Hard Anodize	32mm 7050 Aluminum Hard Anodize	32mm 7050 Aluminum Hard Anodize	32mm 7050 Aluminum Hard Anodize	32mm 7050 Aluminum Hard Anodize	32mm 7050 Aluminum Hard Anodize
Lower	Magnesium 9mm open dropout	Magnesium 9mm open dropout	Magnesium 9mm open dropout	Magnesium 9mm open dropout	Magnesium 9mm open dropout	Magnesium 9mm open dropout
Feature	Hydraulic Rebound-adjust Remote Lock-out Air spring	Hydraulic Rebound-adjust Remote Lock-out Air spring	Hydraulic Rebound-adjust Remote Lock-out Air spring	Hydraulic Rebound-adjust Remote Lock-out Air spring	Hydraulic Rebound-adjust Remote Lock-out Air spring	Hydraulic Rebound-adjust Remote Lock-out Air spring
Damper	OCR	OCR	OCR+	OCR+	OCR+	OCR+
Spring	Air	Air	Air	Air	Air	Air
Adjustment	A, R, RL	A, R, L, C	A, R, RL	A, R, L, C	A, R, RL	A, R, RL
Travel	140 mm	80, 100, 120 mm	80, 100, 120 mm	80, 100, 120 mm	80, 100, 120 mm	80, 100, 120 mm
Fork offset	36mm	51mm	51mm	51mm	43mm	43mm
Fork height (mm)	520	480 / 510 / 530	480 / 510 / 530	480 / 510 / 530	475 / 485 / 515	475 / 485 / 515
Brake Type	Disc or D+V-brake	Disc only	Disc only	Disc only	Disc only	Disc only
Disc Brake Mount	Post	Post	Post	Post	Post	Post
Recommended Max. Rotor Size In mm	203	180	180	180	180	180
Dynamo Bracket Mount	—	—	—	—	—	—
Cable Guide for Hub Dynamo	—	—	—	—	—	—
Roller Brake Mount	—	—	—	—	—	—
Weight (lbs) (w/steerer at 200mm)	2.01	1.99	1.92	1.80	1.83	1.81
Wheel size	26"	26"	26"	26"	27.5"	27.5"
Origin of Production	Taiwan	Taiwan	Taiwan	Taiwan	Taiwan	Taiwan
2015 VS 2014	—	—	—	—	—	—
Remarks						

Bike Category	XC 26		XC 26w		XC 27.5	
	CHAMP	FIRST	FIRST	FIRST	FIRST	FIRST
Model	26 TRL	Platinum TRL	26-15 TRL	29 TRL	27.5-15 TRL	27.5-15
Steerer	28.6mm 7050 Aluminum	28.6mm 7050 Aluminum	28.6mm 7050 Aluminum	28.6mm 7050 Aluminum	28.6mm 7050 Aluminum	28.6mm 7050 Aluminum
1.5" Steerer (Straight or Taper)	Option	Option	Option	Option	Option	Option
Crown	130mm Aluminum, Black Coating	130mm Aluminum, Black Coating	130mm Aluminum, Black Coating	130mm Aluminum, Black Coating	130mm Aluminum, Black Coating	130mm Aluminum, Black Coating
Stanchion	32mm 7050 Aluminum Hard Anodize	30mm 7050 Aluminum Hard Anodize	32mm 7050 Aluminum Hard Anodize	32mm 7050 Aluminum Hard Anodize	32mm 7050 Aluminum Hard Anodize	32mm 7050 Aluminum Hard Anodize
Lower	Magnesium 9mm open dropout	Magnesium 9mm open dropout	Magnesium 15mm QR	Magnesium 9mm open dropout	Magnesium 15mm QR	Magnesium 15mm QR
Feature	Hydraulic Rebound-adjust Remote Lock-out Air spring	Hydraulic Rebound-adjust Remote Lock-out Air spring	Hydraulic Rebound-adjust Remote Lock-out Air spring	Hydraulic Rebound-adjust Remote Lock-out Air spring	Hydraulic Rebound-adjust Remote Lock-out Air spring	Hydraulic Rebound-adjust Remote Lock-out Air spring
Damper	OCR+	OCR 2	OCR 2	OCR	OCR	OCR
Spring	Air	Air	Air	Air	Air	Air
Adjustment	A, R, RL	A, R, L, C	A, R, RL	A, R, RL	A, R, RL	A, R, L, C
Travel	80, 100, 120 mm	80, 100mm	80, 100, 120 mm	80, 100, 120 mm	80, 100, 120 mm	80, 100, 120 mm
Fork offset	38mm	38mm	51mm	51mm	43mm	43mm
Fork height (mm)	460 / 480 / 500	460 / 480	490 / 510 / 530	490 / 510 / 530	475 / 495 / 515	475 / 495 / 515
Brake Type	Disc only	Disc or D+V-brake	Disc only	Disc only	Disc only	Disc only
Disc Brake Mount	Post	Post	Post	Post	Post	Post
Recommended Max. Rotor Size in mm	180	180	180	180	180	180
Dynamo Bracket Mount	—	—	—	—	—	—
Cable Guide for Hub Dynamo	—	—	—	—	—	—
Roller Brake Mount	—	—	—	—	—	—
Weight (lbs) (w/steerer at 200mm)	1.53	1.51	1.62	1.50	1.54	1.56
Wheel size	26"	26"	26"	26"	26"	27.5"
Origin of Production	Taiwan	Taiwan	Taiwan	Taiwan	Taiwan	Taiwan
2015 VS 2014	CHAMP 32	—	—	—	—	New
Remarks			New 15mm Axle			

Bike Category	XC 27.5		XC 26		Junior XC 24		XC 26w		XC 27.5			
	FIRST	27.5 TRL	FIRST	26 TRL	FIRST	24 TRL	FIRST	AERIAL 29	TNL	ML		
Model	27.5 TRL	27.5 TRL	26 TRL	26 TRL	24 TRL	24 TRL	24	24	RL	RL	ML	ML
Steerer	28.6mm 7050 Aluminum	28.6mm 7050 Aluminum	28.6mm 7050 Aluminum	28.6mm 7050 Aluminum	28.6mm 7050 Aluminum	28.6mm 7050 Aluminum	28.6mm 7050 Aluminum	28.6mm 7050 Aluminum	28.6mm 7050 Aluminum	28.6mm 7050 Aluminum	28.6mm 7050 Aluminum	28.6mm 7050 Aluminum
1.5" Steerer (Straight or Taper)	Option	Option	Option	Option	Option	Option	Option	Option	Option	Option	Option	Option
Crown	130mm Aluminum, Black Coating	130mm Aluminum, Black Coating	130mm Aluminum, Black Coating	130mm Aluminum, Black Coating	126mm Aluminum, Black Coating	126mm Aluminum, Black Coating	130mm Aluminum, Black Coating	130mm Aluminum, Black Coating	130mm Aluminum, Black Coating	130mm Aluminum, Black Coating	130mm Aluminum, Black Coating	130mm Aluminum, Black Coating
Stanchion	32mm 7050 Aluminum Hard Anodize	32mm 7050 Aluminum Hard Anodize	32mm 7050 Aluminum Hard Anodize	32mm 7050 Aluminum Hard Anodize	32mm 7050 Aluminum Hard Anodize	32mm 7050 Aluminum Hard Anodize	32mm 7050 Aluminum Hard Anodize	32mm 7050 Aluminum Hard Anodize	32mm 7050 Aluminum Hard Anodize	32mm 7050 Aluminum Hard Anodize	32mm 7050 Aluminum Hard Anodize	32mm 7050 Aluminum Hard Anodize
Lower	Magnesium 9mm open dropout	Magnesium 9mm open dropout	Magnesium 9mm open dropout	Magnesium 9mm open dropout	Magnesium 9mm open dropout	Magnesium 9mm open dropout	Magnesium 9mm open dropout	Magnesium 9mm open dropout	Magnesium 9mm open dropout	Magnesium 9mm open dropout	Magnesium 9mm open dropout	Magnesium 9mm open dropout
Feature	Hydraulic Rebound-adjust Remote Lock-out Air spring	Hydraulic Rebound-adjust Remote Lock-out Air spring	Hydraulic Rebound-adjust Remote Lock-out Air spring	Hydraulic Rebound-adjust Remote Lock-out Air spring	Hydraulic Rebound-adjust Remote Lock-out Air spring	Hydraulic Rebound-adjust Remote Lock-out Air spring	Hydraulic Rebound-adjust Remote Lock-out Air spring	Hydraulic Rebound-adjust Remote Lock-out Air spring	Hydraulic Rebound-adjust Remote Lock-out Air spring	Hydraulic Rebound-adjust Remote Lock-out Air spring	Hydraulic Rebound-adjust Remote Lock-out Air spring	Hydraulic Rebound-adjust Remote Lock-out Air spring
Damper	OCR	OCR	OCR	OCR	OCR	OCR	OCR	OCR	OCR	OCR	OCR	OCR
Spring	Air	Air	Air	Air	Air	Air	Air	Air	Air	Air	Air	Air
Adjustment	A, R, RL	A, R, L, C	A, R, RL	A, R, L, C	A, R, RL	A, R, L, C	A, R, RL	A, R, RL	A, R, RL	A, R, RL	A, L	A, L
Travel	80, 100, 120 mm	80, 100, 120 mm	80, 100, 120 mm	80, 100, 120 mm	80 mm	80 mm	80, 100, 120 mm	80, 100, 120 mm	80, 100, 120 mm	80, 100, 120 mm	80, 100, 120 mm	80, 100, 120 mm
Fork offset	43mm	43mm	38mm	38mm	38mm	38mm	51mm	51mm	43mm	43mm	43mm	43mm
Fork height (mm)	475 / 495 / 515	475 / 495 / 515	460 / 480 / 500	460 / 480 / 500	410	410	480 / 510 / 530	480 / 510 / 530	475 / 495 / 515	475 / 495 / 515	475 / 495 / 515	475 / 495 / 515
Brake Type	Disc only	Disc only	Disc or D+V-brake	Disc or D+V-brake	Disc+V-brake	Disc+V-brake	Disc only	Disc only	Disc only	Disc only	Disc only	Disc only
Disc Brake Mount	Post	Post	Post	Post	Post	Post	Post	Post	Post	Post	Post	Post
Recommended Max. Rotor Size in mm	180	180	180	180	180	180	180	180	180	180	180	180
Dynamo Bracket Mount	—	—	—	—	—	—	—	—	—	—	—	—
Cable Guide for Hub Dynamo	—	—	—	—	—	—	—	—	—	—	—	—
Roller Brake Mount	—	—	—	—	—	—	—	—	—	—	—	—
Weight (lbs) (w/steerer at 200mm)	1.83	1.81	1.82	1.80	1.62	1.60	2.34	2.26	2.05	2.26	2.05	2.00
Wheel size	27.5"	27.5"	26"	26"	24"	24"	26"	26"	27.5"	27.5"	27.5"	27.5"
Origin of Production	Taiwan	Taiwan	Taiwan	Taiwan	Taiwan	Taiwan	Taiwan	Taiwan	Taiwan	Taiwan	Taiwan	Taiwan
2015 VS 2014	—	—	FIRST 32	—	—	—	—	—	—	—	—	—
Remarks			New Lower				New Lower					New Lower

Bike Category	XC 28		Junior XC 24		XC 29er	
	RL	TNL	AERIAL 26	AERIAL 24	OMEGA 29	ML
Model						
Steerer	28.6mm 7050 Aluminum	28.6mm 7050 Aluminum	28.6mm 7050 Aluminum	28.6mm 7050 Aluminum	28.6mm Steel	28.6mm Steel
1.5" Steerer (Straight or Taper)	Option	Option	Option	Option	Option	Option
Crown	130mm Aluminum, Black Coating	130mm Aluminum, Black Coating	130mm Aluminum, Black Coating	125mm Aluminum, Black Coating	130mm Aluminum, ED Black	130mm Aluminum, ED Black
Stanchion	32mm steel CPQ black Magnesium 9mm open dropout	32mm steel CPQ black Magnesium 9mm open dropout	32mm steel CPQ black Magnesium 9mm open dropout	28.6mm steel CPQ black Magnesium 9mm open dropout	32mm steel Ti color Magnesium 9mm open dropout	32mm steel Ti color Magnesium 9mm open dropout
Lower	Hydraulic Lock-out, Air spring	Hydraulic Lock-out, Air spring	Hydraulic Lock-out, Air spring	Mechanical Lock-out	Hydraulic Lock-out	Mechanical Lock-out
Feature						
Damper	Hydraulic Cartridge	Hydraulic Cartridge	Hydraulic Cartridge	Hydraulic Cartridge	Hydraulic Cartridge	Hydraulic Cartridge
Spring	Air	Air	Air	Air	Coil	Coil
Adjustment	A, RL	A, L	A, RL	A, L	RL, P (easy preload)	L, P (easy preload)
Travel	80, 100, 120 mm	80, 100, 120 mm	60 mm	60 mm	80, 100, 120 mm	80, 100, 120 mm
Fork offset	38mm	38mm	38mm	38mm	51mm	51mm
Fork height (mm)	460 / 490 / 500	460 / 490 / 500	410	410	490 / 510 / 530	490 / 510 / 530
Brake Type	Disc or D+V-brake	Disc or D+V-brake	Disc or D+V-brake	Disc or D+V-brake	Disc only	Disc only
Disc Brake Mount	Post	Post	Post	Post	Post	Post
Recommended Max. Rotor Size in mm	180	180	180	180	180	180
Dynamo Bracket Mount	—	—	—	—	—	—
Cable Guide for Hub Dynamo	—	—	—	—	—	—
Roller Brake Mount	—	—	—	—	—	—
Weight (kgs) (w/steerer at 200mm)	2.31	2.25	2.02	1.93	1.73	2.53
Wheel size	28"	28"	28"	24"	28"	28"
Origin of Production	Taiwan	Taiwan	Taiwan	Taiwan	China	China
2015 VS 2014	—	—	—	—	—	—
Remarks						

Bike Category	XC 27.5		XC 26		XC 29er	
	RL	TNL	OMEGA 27.5	OMEGA 26	BLAZE 29	TNL
Model						
Steerer	28.6mm Steel	28.6mm Steel	28.6mm Steel	28.6mm Steel	28.6mm Steel	28.6mm Steel
1.5" Steerer (Straight or Taper)	—	—	—	—	—	—
Crown	130mm Aluminum, ED Black	130mm Aluminum, ED Black	130mm Aluminum, ED Black	130mm Aluminum, ED Black	130mm Aluminum, ED Black	130mm Aluminum, ED Black
Stanchion	32mm steel Ti color Magnesium 9mm open dropout	32mm steel Ti color Magnesium 9mm open dropout	32mm steel Ti color Magnesium 9mm open dropout	30mm steel Ti color Magnesium 9mm open dropout	30mm steel Ti color Magnesium 9mm open dropout	30mm steel CP Aluminum 8mm open dropout
Lower	Hydraulic Lock-out	Hydraulic Lock-out	Hydraulic Lock-out	Hydraulic Lock-out	Hydraulic Lock-out	Hydraulic Lock-out
Feature						
Damper	Hydraulic Cartridge	Hydraulic Cartridge	Hydraulic Cartridge	Hydraulic Cartridge	Hydraulic Cartridge	Hydraulic Cartridge
Spring	Coil	Coil	Coil	Coil	Coil	Coil
Adjustment	RL, P (easy preload)	L, P (easy preload)	L, P (easy preload)	RL, P (easy preload)	L, P (easy preload)	RL, P (easy preload)
Travel	80, 100, 120 mm	80, 100, 120 mm	80, 100, 120 mm	80, 100, 120 mm	80, 100, 120 mm	80, 100, 120 mm
Fork offset	43mm	43mm	38mm	38mm	51mm	51mm
Fork height (mm)	475 / 495 / 515	475 / 495 / 515	460 / 490 / 500	460 / 490 / 500	490 / 510 / 530	490 / 510 / 530
Brake Type	Disc only	Disc only	Disc or D+V-brake	Disc or D+V-brake	Disc or D+V-brake	Disc or D+V-brake
Disc Brake Mount	Post	Post	Post	Post	Post	Post
Recommended Max. Rotor Size in mm	180	180	180	180	180	180
Dynamo Bracket Mount	—	—	—	—	—	—
Cable Guide for Hub Dynamo	—	—	—	—	—	—
Roller Brake Mount	—	—	—	—	—	—
Weight (kgs) (w/steerer at 200mm)	2.36	2.30	2.07	2.43	2.11	2.90
Wheel size	27.5"	27.5"	27.5"	26"	28"	28"
Origin of Production	China	China	China	China	China	China
2015 VS 2014	—	—	—	—	—	—
Remarks	New Lower	New Lower	New Lower	New Lower	New Lower	New Lower

Bite Category	XC 29er		XC 27.5			XC 26			XC / Sport 27.5			
	ML	T	RL	TNL	ML	T	RL	TNL	ML	T	RL	TNL
Model	BLAZE 29		BLAZE 27.5			BLAZE 26			GILA 27.5		TNL	
Steerer	28.6mm Steel	28.6mm Steel	28.6mm Steel	28.6mm Steel	28.6mm Steel	28.6mm Steel	28.6mm Steel	28.6mm Steel	28.6mm Steel	28.6mm Steel	28.6mm Steel	28.6mm Steel
1.5" Steerer (Straight or Taper)	—	—	—	—	—	—	—	—	—	—	—	—
Crown	130mm Aluminum, ED Black	130mm Aluminum, ED Black	130mm Aluminum, ED Black	130mm Aluminum, ED Black	130mm Aluminum, ED Black	130mm Aluminum, ED Black	130mm Aluminum, ED Black	125mm Aluminum, ED Black	125mm Aluminum, ED Black	125mm Aluminum, ED Black	125mm Aluminum, ED Black	125mm Aluminum, ED Black
Stanchion	30mm steel CP	30mm steel CP	30mm steel CP	30mm steel CP	30mm steel CP	30mm steel CP	30mm steel CP	30mm steel CP	30mm steel CP	30mm steel CP	28.6mm steel CP	28.6mm steel CP
Lower	Aluminum 9mm open dropout	Aluminum 9mm open dropout	Aluminum 9mm open dropout	Aluminum 9mm open dropout	Aluminum 9mm open dropout	Aluminum 9mm open dropout	Aluminum 9mm open dropout	Aluminum 9mm open dropout	Aluminum 9mm open dropout	Aluminum 9mm open dropout	Aluminum 9mm open dropout	Aluminum 9mm open dropout
Feature	Mechanical Lock-out	Hydraulic Remote Lock-out	Hydraulic Lock-out	Mechanical Lock-out	Hydraulic Lock-out	Hydraulic Remote Lock-out	Hydraulic Lock-out	Hydraulic Lock-out	Mechanical Lock-out	—	Hydraulic Remote Lock-out	Hydraulic Lock-out
Damper	—	—	—	—	—	—	—	—	—	—	—	—
Spring	Coil	Coil	Coil	Coil	Coil	Coil	Coil	Coil	Coil	Coil	Coil	Coil
Adjustment	L, P	P	RL, P	L, P	L, P	P	RL, P	L, P	L, P	P	RL, P	L, P
Travel	80, 100, 120 mm	80, 100, 120 mm	80, 100, 120, 130 mm	80, 100, 120, 130 mm	80, 100, 120, 130 mm	80, 100, 120 mm	80, 100, 120 mm	80, 100, 120 mm	80, 100, 120 mm	80, 100 mm	80, 100 mm	80, 100 mm
Fork offset	51mm	51mm	38mm	38mm	38mm	38mm	41mm	41mm	41mm	43mm	43mm	43mm
Fork height (mm)	490 / 510 / 530	490 / 510 / 530	475 / 495 / 515 / 525	475 / 495 / 515 / 525	475 / 495 / 515 / 525	475 / 495 / 515 / 525	460 / 480 / 500	460 / 480 / 500	460 / 480 / 500	475 / 495	475 / 495	475 / 495
Brake Type	Disc or D+V-brake	Disc or D+V-brake	Disc only	Disc only	Disc only	Disc only	Disc or D+V-brake	Disc or D+V-brake	Disc or D+V-brake	Disc or D+V-brake	Disc or D+V-brake	Disc or D+V-brake
Disc Brake Mount	Post	Post	Post	Post	Post	Post	Post	Post	Post	Post	Post	Post
Recommended Max. Rotor Size in mm	180	180	180	180	180	180	180	180	180	180	180	180
Dynamo Bracket Mount	—	—	—	—	—	—	—	—	—	—	—	—
Cable Guide for Hub Dynamo	—	—	—	—	—	—	—	—	—	—	—	—
Roller Brake Mount	—	—	—	—	—	—	—	—	—	—	—	—
Weight (kgs) (w/steerer at 200mm)	2.61	2.61	2.82	2.76	2.51	2.55	2.81	2.81	2.55	2.23	2.34	2.50
Wheel size	28"	28"	27.5"	27.5"	27.5"	27.5"	28"	28"	28"	28"	27.5"	27.5"
Origin of Production	China	China	China	China	China	China	China	China	China	China	China	China
2015 VS 2014	—	—	—	—	—	—	—	—	—	—	—	New
Remarks	—	—	—	—	—	—	—	—	—	—	—	—

Bite Category	XC / Sport 27.5		XC / Sport 26			Sport			Dirt Jump			E-Bike	
	ML	T	RL	TNL	ML	T	ML 26, 24	T26, T24, T20	RA	T	RL	TNL	PULSE AIR 29
Model	GILA 27.5		GILA 26			CAIPA			DIRT			PULSE AIR 29	
Steerer	28.6mm Steel	28.6mm Steel	28.6mm Steel	28.6mm Steel	28.6mm Steel	28.6mm Steel	28.6 / 25.4mm Steel	28.6 / 25.4mm Steel	28.6mm Steel	28.6mm Steel	28.6mm Steel	28.6mm Steel	28.6mm Steel
1.5" Steerer (Straight or Taper)	—	—	—	—	—	—	—	—	—	—	—	—	—
Crown	125mm Aluminum, ED Black	125mm Aluminum, ED Black	125mm Aluminum, ED Black	125mm Aluminum, ED Black	125mm Aluminum, ED Black	125mm Aluminum, ED Black	120mm Aluminum, ED Black	120mm Aluminum, ED Black	130mm Aluminum, ED Black	130mm Aluminum, ED Black	130mm Aluminum, ED Black	130mm Aluminum, ED Black	130mm Aluminum, ED Black
Stanchion	28.6mm steel CP	28.6mm steel CP	28.6mm steel CP	28.6mm steel CP	28.6mm steel CP	28.6mm steel CP	25.4mm steel CP	25.4mm steel CP	32mm steel CP	32mm steel CP	30mm steel CPQ black	30mm steel CPQ black	30mm steel CPQ black
Lower	Aluminum 9mm open dropout	Aluminum 9mm open dropout	Aluminum 9mm open dropout	Aluminum 9mm open dropout	Aluminum 9mm open dropout	Aluminum 9mm open dropout	Aluminum 9mm open dropout	Aluminum 9mm open dropout	Aluminum 9mm open dropout	Aluminum 9mm open dropout	Aluminum 9mm open dropout	Aluminum 9mm open dropout	Aluminum 9mm open dropout
Feature	Mechanical Lock-out	Hydraulic Remote Lock-out	Hydraulic Lock-out	Hydraulic Lock-out	Mechanical Lock-out	Mechanical Lock-out	Mechanical Lock-out	Mechanical Lock-out	Hydraulic Rebound-adjust	—	Hydraulic Remote Lock-out	Hydraulic Remote Lock-out	Hydraulic Lock-out
Damper	—	—	—	—	—	—	—	—	Hydraulic Cartridge	—	Hydraulic Cartridge	Hydraulic Cartridge	Hydraulic Cartridge
Spring	Coil	Coil	Coil	Coil	Coil	Coil	Coil	Coil	Coil	Coil	Air	Air	Air
Adjustment	L, P	P	RL, P	L, P	L, P	P	L, P	P	R, P	P	A, RL	A, RL	A, L
Travel	80, 100 mm	80, 100 mm	80, 100 mm	80, 100 mm	80, 100 mm	80, 100 mm	28" / 24": 80 / 50 mm 28" / 24" / 20": 80 / 50 / 50 mm	28" / 24": 80 / 50 mm 28" / 24" / 20": 80 / 50 / 50 mm	60, 100, 130 mm	60, 100, 130 mm	50 mm	50 mm	50 mm
Fork offset	43mm	43mm	38mm	38mm	38mm	38mm	38mm	38mm	38mm	38mm	51mm	51mm	51mm
Fork height (mm)	475 / 495	475 / 495	460 / 480	460 / 480	460 / 480	460 / 480	460 / 398	460 / 398 / 373	460 / 480 / 510	460 / 480 / 510	460	460	460
Brake Type	Disc or D+V-brake	Disc or D+V-brake	Disc or D+V-brake	Disc or D+V-brake	Disc or D+V-brake	Disc or D+V-brake	Disc or D+V-brake	Disc or D+V-brake	Disc or D+V-brake	Disc or D+V-brake	Disc or D+V-brake	Disc or D+V-brake	Disc or D+V-brake
Disc Brake Mount	Post	Post	Post	Post	Post	Post	Post	Post	Post	Post	Post	Post	Post
Recommended Max. Rotor Size in mm	180	180	180	180	180	180	180	180	180	180	180	180	180
Dynamo Bracket Mount	—	—	—	—	—	—	—	—	—	—	—	—	—
Cable Guide for Hub Dynamo	—	—	—	—	—	—	—	—	—	—	—	—	—
Roller Brake Mount	—	—	—	—	—	—	—	—	—	—	—	—	—
Weight (kgs) (w/steerer at 200mm)	2.19	2.14	2.41	2.35	2.10	2.06	2.03 / 1.93	1.98 / 1.84 / 1.75	3.01	3.05	2.89	2.89	2.83
Wheel size	27.5"	28"	28"	28"	28"	28"	Available for 28" / 24"	Available for 28" / 24" / 20"	28"	28"	28"	28"	28"
Origin of Production	China	China	China	China	China	China	China	China	China	China	China	Taiwan	Taiwan
2015 VS 2014	—	—	—	—	—	—	—	—	—	—	—	—	—
Remarks	—	—	—	—	—	—	—	—	—	—	—	—	—

Bike Category	E-Bike						Cross			
	PULSE AIR 27.5		PULSE AIR 26		PULSE COIL 29		PULSE COIL 26		VOGUE	
Model	RL	TNL	RL	TNL	RL	TNL	RL	TNL	Air TRL	Air
Steeerer	28.6mm Steel	28.6mm Steel	28.6mm Steel	28.6mm Steel	28.6mm Steel	28.6mm Steel	28.6mm Steel	28.6mm Steel	28.6mm 7060 Aluminum	28.6mm 7060 Aluminum
1.5" Steerer (Straight or Taper)									Option	Option
Crown	130mm Aluminum, ED Black	125mm Aluminum, ED Black	130mm Aluminum, ED Black	130mm Aluminum, ED Black	130mm Aluminum, ED Black	130mm Aluminum, ED Black	125mm Aluminum, ED Black	125mm Aluminum, ED Black	112mm Aluminum, Black Coating	112mm Aluminum, Black Coating
Stanchion	30mm steel	30mm steel	30mm steel	30mm steel	30mm steel	30mm steel	30mm steel	30mm steel	7060 Aluminum	7060 Aluminum
Lower	9mm open dropout	9mm open dropout	9mm open dropout	9mm open dropout	9mm open dropout	9mm open dropout	9mm open dropout	9mm open dropout	Hard Anodize	Hard Anodize
Feature	Hydraulic Remote Lock-out Air spring	Hydraulic Remote Lock-out Air spring	Hydraulic Remote Lock-out Air spring	Hydraulic Remote Lock-out	Hydraulic Remote Lock-out	Hydraulic Remote Lock-out	Hydraulic Remote Lock-out	Hydraulic Remote Lock-out	Hydraulic Remote Lock-out	Hydraulic Remote Lock-out
Damper	Hydraulic Cartridge	Hydraulic Cartridge	Hydraulic Cartridge	Hydraulic Cartridge	Hydraulic Cartridge	Hydraulic Cartridge	Hydraulic Cartridge	Hydraulic Cartridge	OCR	OCR
Spring	Air	Air	Air	Coil	Coil	Coil	Coil	Coil	Air	Air
Adjustment	A, RL	A, L	A, RL	A, L	RL, P	L, P	RL, P	L, P	A, R, RL	A, R, L, C
Travel	50 mm	50 mm	50 mm	50 mm	50 mm	50 mm	50 mm	50 mm	50, 60, 75 mm	50, 60, 75 mm
Fork offset	43mm	38mm	43mm	43mm	43mm	43mm	38mm	38mm	44mm	44mm
Fork height (mm)	445	430	445	445	445	445	430	430	460 / 470 / 485	460 / 470 / 485
Brake Type	Disc only	Disc or D-V-brake	Disc only	Disc or D-V-brake	Disc only	Disc only	Disc or D-V-brake	Disc or D-V-brake	Disc or D-V-brake	Disc or D-V-brake
Disc Brake Mount	Post	Post	Post	Post	Post	Post	Post	Post	Is	Is
Recommended Max. Rotor Size in mm	180	180	180	180	180	180	180	180	180	180
Dynamo Bracket Mount	—	—	—	—	—	—	—	—	—	no
Cable Guide for Hub Dynamo	—	—	—	—	—	—	—	—	—	option
Roller Brake Mount	—	—	—	—	—	—	—	—	—	no
Weight (kgs) (w/steerer at 200mm)	2.81	2.75	2.80	2.84	2.80	2.84	2.82	2.78	2.61	2.55
Wheel size	27.5"	27.5"	28"	29"	27.5"	28"	27.5"	28"	700C only	700C only
Origin of Production	Taiwan	Taiwan	Taiwan	Taiwan	Taiwan	Taiwan	Taiwan	Taiwan	Taiwan	Taiwan
2015 VS 2014	—	—	—	—	—	—	—	—	—	—
Remarks										

Bike Category	Cross						Cross			
	VIVAIR		VITA		NOVA		NEON			
Model	RL	TNL	RL	TNL	ML	T	RL	ML	ML	T
Steeerer	28.6mm 7060 Aluminum	28.6mm 7060 Aluminum	28.6 / 25.4mm Steel	28.6 / 25.4mm Steel	28.6 / 25.4mm Steel	28.6 / 25.4mm Steel	28.6 / 25.4mm Steel	28.6 / 25.4mm Steel	28.6 / 25.4mm Steel	28.6 / 25.4mm Steel
1.5" Steerer (Straight or Taper)	Option	Option	—	—	—	—	—	—	—	—
Crown	112mm Aluminum, Black Coating	112mm Aluminum, Black Coating	112mm Aluminum, ED Black	112mm Aluminum, ED Black	112mm Aluminum, ED Black	112mm Aluminum, ED Black	112mm Aluminum, ED Black	112mm Aluminum, ED Black	112mm Aluminum, ED Black	112mm Aluminum, ED Black
Stanchion	28.6mm steel	28.6mm steel	28.6mm steel	28.6mm steel	28.6mm steel	28.6mm steel	28.6mm steel	28.6mm steel	28.6mm steel	28.6mm steel
Lower	8mm open dropout	8mm open dropout	8mm open dropout	8mm open dropout	8mm open dropout	8mm open dropout	8mm open dropout	8mm open dropout	8mm open dropout	8mm open dropout
Feature	Hydraulic Remote Lock-out Air spring	Hydraulic Remote Lock-out Air spring	Hydraulic Remote Lock-out	Hydraulic Remote Lock-out	Mechanical Lock-out	—	Hydraulic Remote Lock-out	Hydraulic Remote Lock-out	Mechanical Lock-out	—
Damper	OCR	OCR	Hydraulic Cartridge	Hydraulic Cartridge	—	—	Hydraulic Cartridge	—	—	—
Spring	Air	Air	Coil	Coil	Coil	Coil	Coil	Coil	Coil	Coil
Adjustment	A, RL	L, P	A, RL	L, P	A, L	P	R, RL	L, P	L, P	L, P
Travel	50, 60 mm	50 mm	44mm	44mm	44mm	50, 60 mm	50, 60 mm	700C: 50, 60 mm	28": 75 mm	28": 75 mm
Fork offset	44mm	44mm	44mm	44mm	44mm	44mm	44mm	700C: 44 mm	26": 35 mm	26": 35 mm
Fork height (mm)	480 / 470	480 / 470	480 / 470	480 / 470	480 / 470	480 / 470	480 / 470	700C: 480 / 470	26": 465	26": 465
Brake Type	Disc or D-V-brake	Disc or D-V-brake	Disc or D-V-brake	Disc or D-V-brake	Disc or D-V-brake	Disc or D-V-brake	Disc or D-V-brake	Disc or D-V-brake	Disc-V-brake	Disc-V-brake
Disc Brake Mount	IS	IS	IS	IS	IS	IS	IS	IS	IS	IS
Recommended Max. Rotor Size in mm	180	180	180	180	180	180	180	180	180	180
Dynamo Bracket Mount	no	no	no	no	no	no	no	no	yes	yes
Cable Guide for Hub Dynamo	option	option	option	option	option	option	option	option	option	option
Roller Brake Mount	no	no	no	no	no	no	no	no	no	no
Weight (kgs) (w/steerer at 200mm)	2.08	2.02	2.26	2.20	1.98	1.98	2.57	2.30	2.17	1.95
Wheel size	700C only	700C only	700C only	700C only	700C only	700C only	700C only	700C only	Available for 700C & 26"	Available for 700C & 26"
Origin of Production	Taiwan	Taiwan	China	China	China	China	China	China	China	China
2015 VS 2014	—	—	—	—	—	—	—	—	—	—
Remarks										

RST GLOBAL

GLOBAL DISTRIBUTORS



RST USA OFFICE.

After-Sales Service, Marketing, W. America
Contact: Michael Dunn
Email: sales@rstusaonline.com

RST S.CHINA HUIYANG, CHINA

Manufacturing (overseas)

RST E.CHINA JIANGSU, CHINA

Manufacturing (domestic)

RST HEADQUARTER, TAIPEI, TAIWAN

Product development, Global sales, Manufacturing
Email: rst@rat.com.tw

RST EUROPEAN TEST CENTRE SINGLTREK POD SMRKEM

<http://www.singltrakpodsmrkem.cz/>

RST EUROPE OFFICE. STUTTGART, GERMANY

After-Sales Service, Marketing, Europe sales
Contact: Stephan Guddat
Email: info@rst-europe.eu



- RST Global office
- RST Global distributors
- RST EUROPEAN TEST CENTRE SINGLTREK

ARGENTINA

Carlos Karabitan
Tel : 54-361-4838080
Fax: 54-361-4931003
carlos@karabitan.com.ar

AUSTRIA

Thalinger Lange GmbH
Tel : 43-7242-497260
Fax: 43-7242-497401
mail@thalinger-lange.com

BRAZIL

LM BIKE
Tel : 55-37-3282-5100
faleconosco@lmbike.com.br

BENELUX

Cyclis bv
Tel : 31-(0)20-6892838
Fax: 31-(0)20-8154589
info@cyclis.nl

CHILE

ANDES Industrial Ltd.
Tel : 66-2-719-1100
Fax: 66-2-719-1138
andes@andesindustrial.cl

COLOMBIA

Len Importaciones
Tel : 57-7-871-2222
marcela@lenimp.com

CENTER AMERICA

DISTRIBUIDORA
OCHENTA Y SEIS S.A
TEL : 506-445-6669
FAX : 506-445-8185
Info@superpro.ws

SLOVENIA/CROATIA

CS-EUROTRADE d.o.o.
Tel : 386-7-49-02-500
Fax: 386-7-49-02-549
info@cs-eurotrade.com

CHINA

Suzhou Dawei Precision Co., Ltd.
Tel : 86-512-8616-0698
Fax: 86-512-8616-0100
services@rol-topway.cn

ESTONIA

Velo Plus.
Tel : 372-6-555-577
Fax: 373-6-559-308
Info@veloplus.ee

FRANCE

RST-Paul Lange France SARL
Tel : 03-88-932101
Fax: 03-88-933432
paul.bahnke@paul-lange.de

GERMANY

Paul Lange & Co.
Tel : 49-711-258802
Fax: 49-711-2588305
info@paul-lange.de

HUNGARY

VELOBIKE Kft.
Tel : 36-1-455-8010
Fax: 36-1-455-8019

INDONESIA

PT BINTANG TIMUR
Tel : 021-8300656
Fax: 021-6336982
bt@unitedbike

ISRAEL

Renofun
Tel : 97-2545-800212
Fax: 972-8-9200061
renofun@gmail.com

ITALY

Ciclo Promo Componente SPA
Tel : 39-0423-1986363
Fax: 39-0423-1986364
Info@ciclopromo.com

KOREA

MBS Corporation
Tel : 82-55-265-9415
Fax: 82-55-265-9419
mbs@mbssama.com

MEXICO

VG COMPONENT
Tel : 52-33-343-3642
Info@vgbikes.com

GREECE

Nikos Maniatispoucos S.A.
Tel : 30-2610-993045
Fax: 30-2610-990424
amerkot@ideallbikes.gr

NORWAY

Deler A/S
Tel : 47-6498-9950
Fax: 47-6498-9968
support@deler.no

POLAND

Velo Sp. Z. O. O.
Tel : 48-32-232-83-77
Fax: 48-32-232-83-80
office@velo.com.pl

PORTUGAL

Motokit
Tel : 351-234-825607
Fax: 351-234-825906
mail@motokit.com.pt

RUSSIA

MAXIMUM Ltd.
Tel : +7-812-740-79-62
maximum@msgbox.ru

SWITZERLAND

Fuchs-movese AG
Tel : 82-865-65-06
Fax: 82-865-68-09
Info@fuchs-movese.ch

THAILAND

Aeas International
Business&Sales Co., Ltd.
Tel : 66-2-867-7813-4
Fax: 66-2-448-3150
seema1@ksc.th.com

TAIWAN

Chyuan Hong Yi Enterprise Co., Ltd.
Tel : 886-4-2629-7719
Fax: 886-4-2629-0751

U.K.

Claud Butler
Tel : +44 (0)1652 656000
Fax: +44 (0)1652 656040
rstuk@claudbutler.co.uk

U.S.A

Quality Bicycle Products
Tel : 1-800-348-0004
Fax: 1-800-348-0211
sales@qbp.com

VENEZUELA

Industrias Metalica, C.A.
Tel : 58-212-3712480
Fax: 58-212-3736980
metalica@centv.net

PHILIPPINES

Comet Cycle Center
Tel : +63-2-375-5591
Fax: +63-2-375-5590
comet@piddsl.net

CZECH/SLOVAK REPUBLIC

Univerza Agency spol. s.r.o.
Tel : 420-244-990-777
Fax: 420-244-990-778
petr.fiala@univerza.cz